

# GPS SURVEY MARK DESCRIPTION

GIS MAPPING BY:  
THE SIDWELL COMPANY  
WEST CHICAGO, ILLINOIS

THE OFFICE OF THE  
COUNTY ENGINEER  
WEBSTER COUNTY, IOWA

DESIGNATION 34 WMC GPS No. 9615 COUNTY WEBSTER STATE IOWA

LOCATED IN SECTION 13 TWP 86 N RGE 27 W USGS QUAD MAP STRATFORD

TO REACH FROM THE INTERSECTION OF 370TH STREET AND WASHINGTON AVENUE (D 64), SOUTHWEST OF STRATFORD: GO EAST 1.25 MILES TO MARK. DISC IS STAMPED "ELEV. 1129 ABOVE SEA 34 WMC 1964".

NORTH AND EAST EDGE OF CONCRETE IS CHIPPED AND MONUMENT IS LEANING 10° TO SOUTH. DISC IS MARRED. NOTE: THE PUBLISHED USGS ELEV. HAS BEEN IGNORED. THE NEW ELEV. APPEARS BELOW.

TYPE OF MARK STANDARD BRONZE USGS DISC IN 8" X 8" CONCRETE MONUMENT PROJECTING 1.0 FOOT.

MARK RECOVERED  GPS VALUES SET BY DENI ASSOCIATES, INC., FT. MYERS, FL DATE AUGUST 1996

HORIZONTAL CONTROL ORIGINATED ON ORDER "B" CONTROL BASED ON THE IOWA HIGH ACCURACY REFERENCE NETWORK, NORTH AMERICAN DATUM OF 1983/1997 ADJUSTMENT (NAD83/97).

IOWA COORDINATE SYSTEM, NORTH ZONE GRID SCALE FACTOR: \_\_\_\_\_

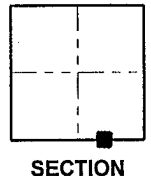
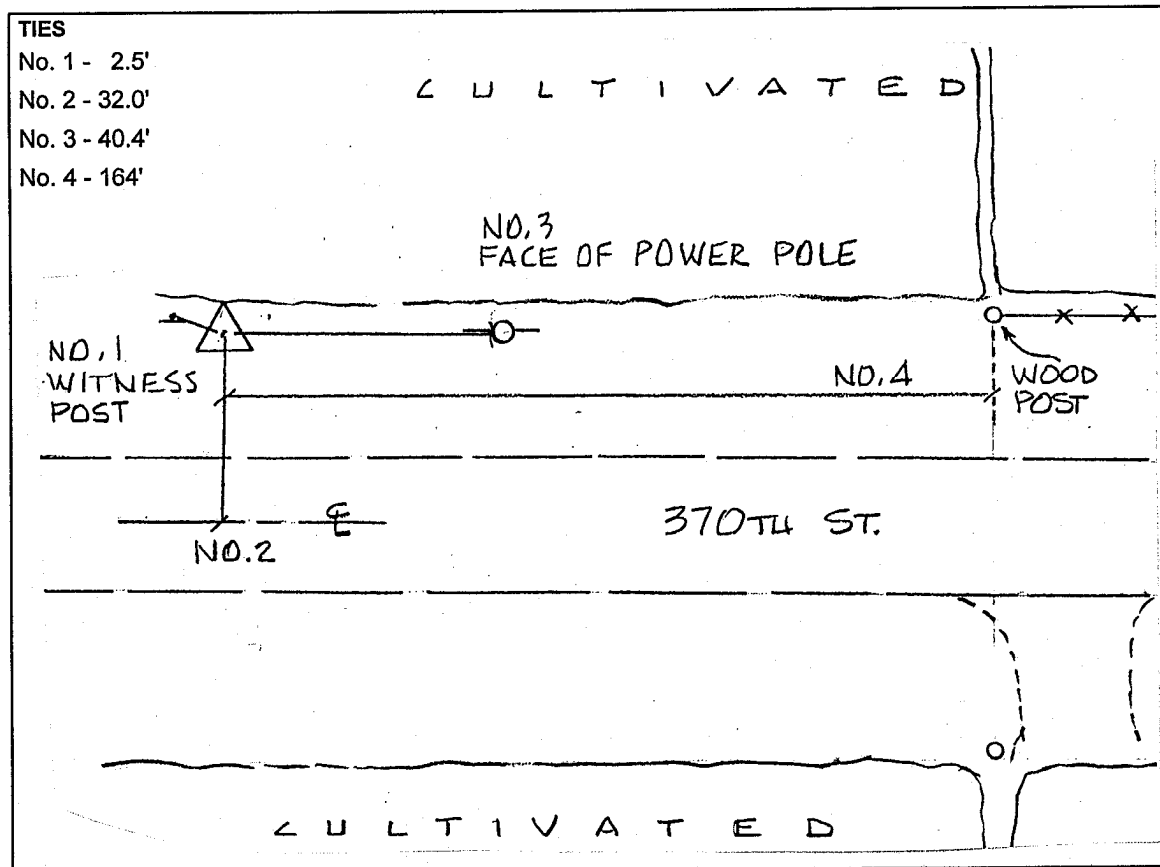
COORDINATES (US FEET) COORDINATES (METERS)

NORTHING (Y) \_\_\_\_\_ NORTHING (Y) \_\_\_\_\_

EASTING (X) \_\_\_\_\_ EASTING (X) \_\_\_\_\_

VERTICAL CONTROL ORIGINATED ON 1ST ORDER CONTROL ESTABLISHED BY NATIONAL GEODETIC SURVEY ON NORTH AMERICAN VERTICAL DATUM OF 1988 (NAVD88).

ELEVATION (US FEET) \_\_\_\_\_ ELEVATION (METERS) \_\_\_\_\_



SKETCH BY DSW  
DENI 9605023