

**WINNEBAGO COUNTY, IOWA
GPS CONTROL MONUMENT
IOWA NORTH ZONE (1401)
HORIZONTAL DATUM - NAD 83 (1996)
VERTICAL DATUM - NAVD 1988**

GPS POINT NUMBER **G1**

	US SURVEY FEET	METRIC
Northing:	3920926.908	1195100.912
Easting:	4795955.357	1461810.117
Elevation:	1183.633	360.772
Ellipsoid Height:	1088.472	331.767
Geoid 99 Height:	-95.162	-29.005

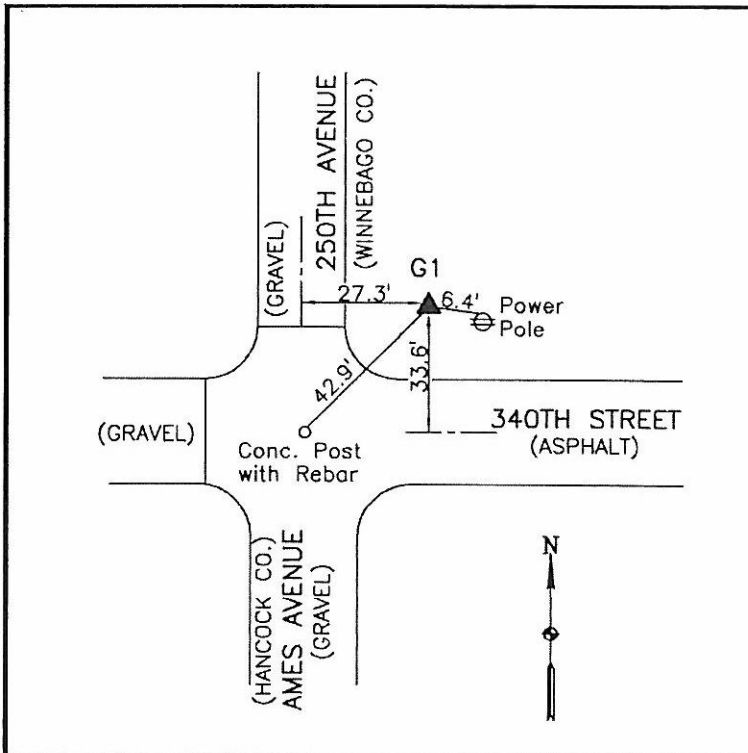
Latitude:	43°15'19.58088"N
Longitude:	93°58'13.11022"W
Scale Factor:	0.9999979679
Convergence:	-0°19'07"
Combined Factor:	0.99994604

Description:

Found NGS Style Aluminum Monument With Access Cover

Location:

NE Corner of 340th Street and 250th Avenue - near SW Corner Section 31-T98N-R26W.



WHKS & CO.