

**WINNEBAGO COUNTY, IOWA
GPS CONTROL MONUMENT
IOWA NORTH ZONE (1401)
HORIZONTAL DATUM - NAD 83 (1996)
VERTICAL DATUM - NAVD 1988**

GPS POINT NUMBER **G3**

	US SURVEY FEET	METRIC
Northing:	3920604.355	1195002.597
Easting:	4859018.542	1481031.814
Elevation:	1275.104	388.652
Ellipsoid Height:	1178.753	359.285
Geoid 99 Height:	-96.351	-29.368

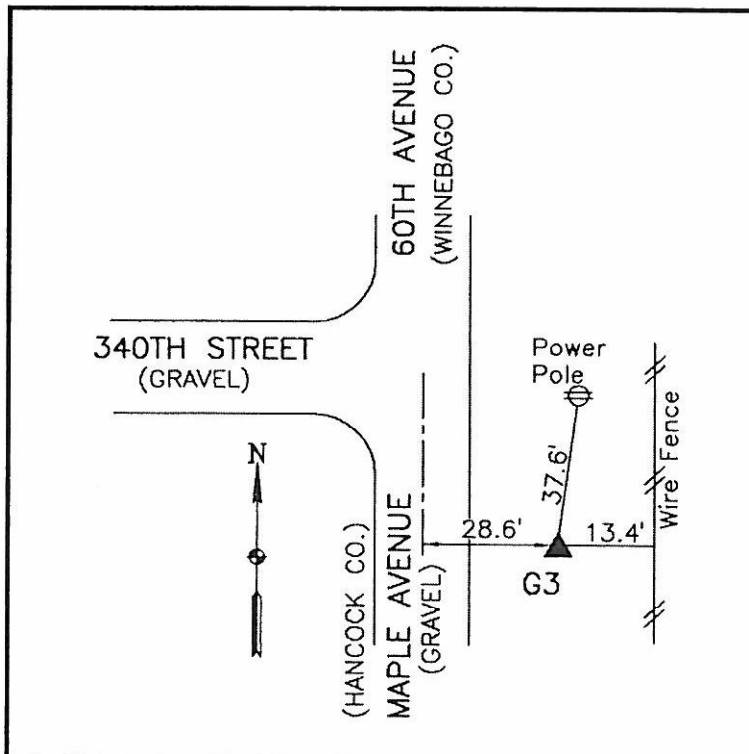
Latitude:	43°15'18.98819"N
Longitude:	93°44'00.93003"W
Scale Factor:	0.9999979384
Convergence:	-0°09'30"
Combined Factor:	0.99994170

Description:

Found NGS Style Aluminum Monument With Access Cover

Location:

SE Corner of 340th Street and 9th Avenue - near SW Corner Section 31-T98N-R24W.



WHKS & CO.