

**WINNEBAGO COUNTY, IOWA  
GPS CONTROL MONUMENT  
IOWA NORTH ZONE (1401)  
HORIZONTAL DATUM - NAD 83 (1996)  
VERTICAL DATUM - NAVD 1988**

GPS POINT NUMBER **G4**

	US SURVEY FEET	METRIC
Northing:	3920266.205	1194899.529
Easting:	4890063.185	1490494.240
Elevation:	1228.885	374.565
Ellipsoid Height:	1132.484	345.182
Geoid 99 Height:	-96.401	-29.383

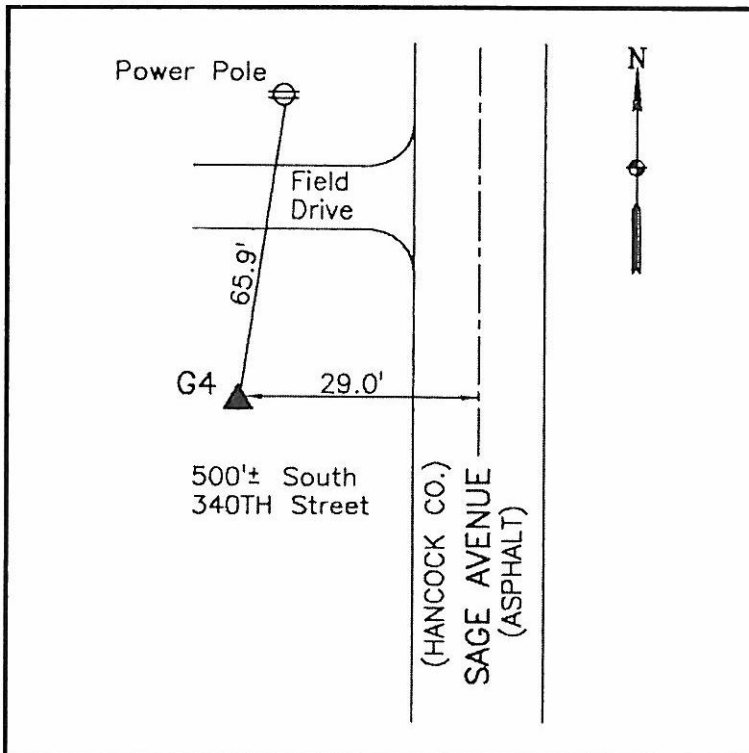
Latitude:	43°15'16.28427"N
Longitude:	93°37'01.42007"W
Scale Factor:	0.9999978039
Convergence:	-0°04'46"
Combined Factor:	0.99994377

Description:

Found NGS Style Aluminum Monument With Access Cover

Location:

On the west side of Sage Avenue (Hancock Co.) - 500'± south of the NW Corner Section 6-T97N-R23W.



**WHKS & CO.**