

**WINNEBAGO COUNTY, IOWA  
GPS CONTROL MONUMENT  
IOWA NORTH ZONE (1401)  
HORIZONTAL DATUM - NAD 83 (1996)  
VERTICAL DATUM - NAVD 1988**

GPS POINT NUMBER **G101**

	US SURVEY FEET	METRIC
Northing:	3923699.092	1195945.875
Easting:	4905976.778	1495344.713
Elevation:	1242.069	378.583
Ellipsoid Height:	1145.884	349.266
Geoid 99 Height:	-96.185	-29.317

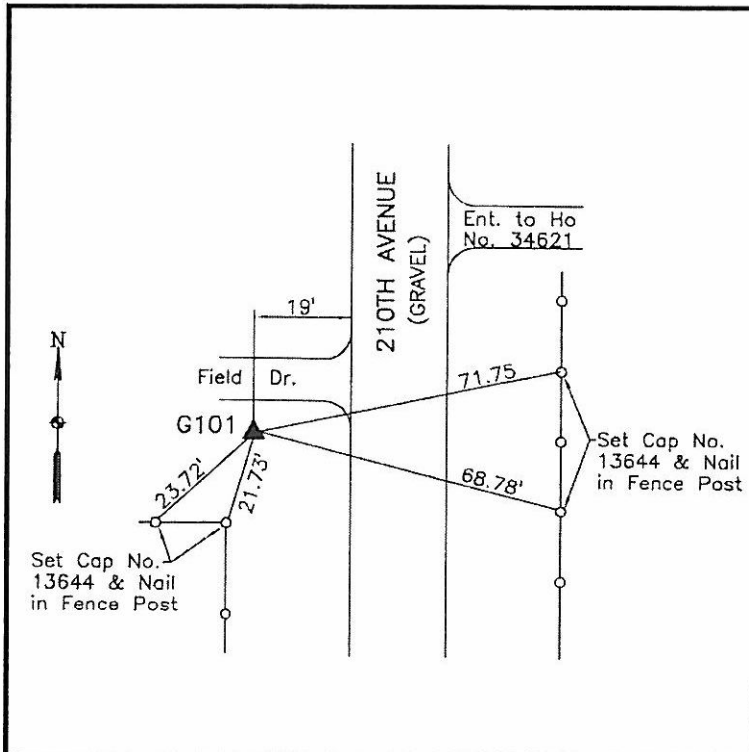
Latitude:	43°15'50.35210"N
Longitude:	93°33'26.41501"W
Scale Factor:	0.9999995114
Convergence:	-0°02'20"
Combined Factor:	0.99994484

**Description:**

Placed 5/8" X 6' - 0" Long Aluminum Rod with Cap Stamped G101 and NGS Style Access Cover 2 " Deep.

**Location:**

West side 210th Avenue - 0.4± mile south of 430th Street (Highway 9) - near W1/4 Section 34-T98N-R23W.



**WHKS & CO.**