

**WINNEBAGO COUNTY, IOWA
GPS CONTROL MONUMENT
IOWA NORTH ZONE (1401)
HORIZONTAL DATUM - NAD 83 (1996)
VERTICAL DATUM - NAVD 1988**

GPS POINT NUMBER **G102**

	US SURVEY FEET	METRIC
Northing:	3923267.823	1195814.424
Easting:	4875630.799	1486095.240
Elevation:	1243.819	379.117
Ellipsoid Height:	1147.362	349.717
Geoid 99 Height:	-96.457	-29.400

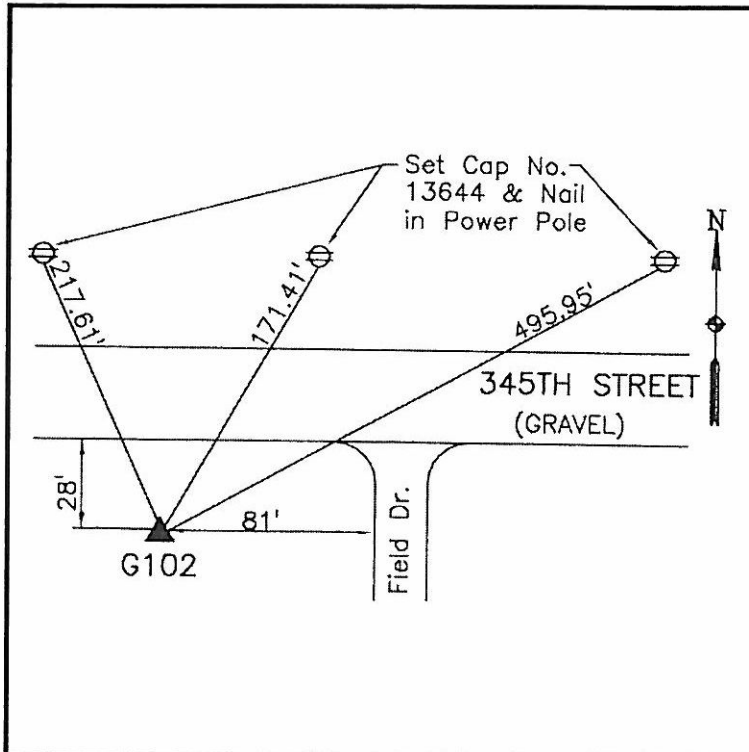
Latitude:	43°15'45.68736"N
Longitude:	93°40'16.52322"W
Scale Factor:	0.9999992760
Convergence:	-0°06'58"
Combined Factor:	0.99994453

Description:

Placed 5/8" X 6' - 0" Long Aluminum Rod with Cap Stamped G102 and NGS Style Access Cover 2 " Deep.

Location:

On south side 345th Street - 90'± west of field entrance - 0.75± mile east of 145th Avenue - near W1/4 Section 34-T98N-R24W.



WHKS & CO.