

**WINNEBAGO COUNTY, IOWA
GPS CONTROL MONUMENT
IOWA NORTH ZONE (1401)
HORIZONTAL DATUM - NAD 83 (1996)
VERTICAL DATUM - NAVD 1988**

GPS POINT NUMBER **G103**

	US SURVEY FEET	METRIC
Northing:	3921120.772	1195160.002
Easting:	4843310.852	1476244.100
Elevation:	1300.282	396.327
Ellipsoid Height:	1204.144	367.024
Geoid 99 Height:	-96.138	-29.303

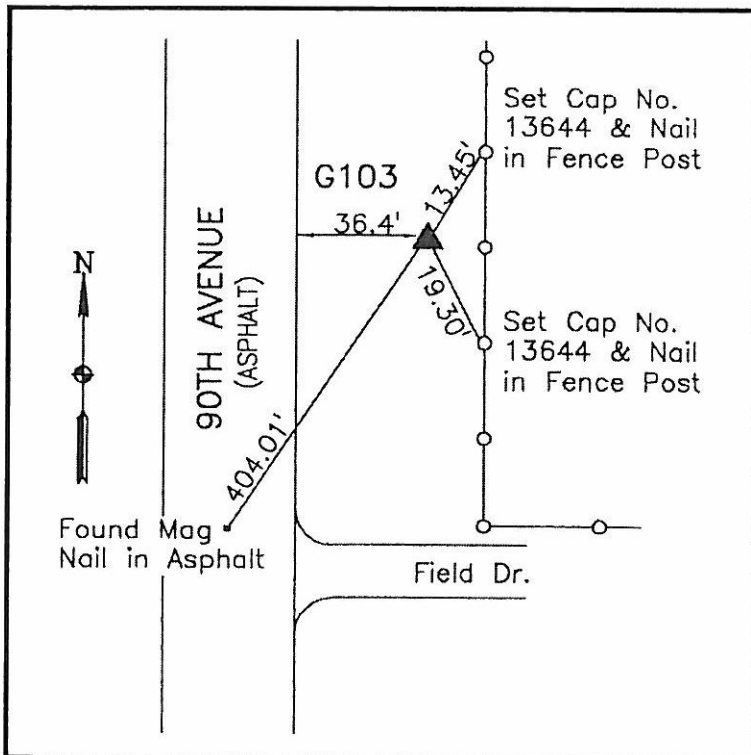
Latitude:	43°15'23.60591"N
Longitude:	93°47'33.20975"W
Scale Factor:	0.9999981685
Convergence:	-0°11'54"
Combined Factor:	0.99994072

Description:

Placed 5/8" X 6' - 0" Long Aluminum Rod with Cap Stamped G103 and NGS Style Access Cover 2 " Deep.

Location:

On east side 90th Avenue - 300'± north of 340th Street - near SW Corner of Section 34-T98N-R25W.



WHKS & CO.