

**WINNEBAGO COUNTY, IOWA
GPS CONTROL MONUMENT
IOWA NORTH ZONE (1401)
HORIZONTAL DATUM - NAD 83 (1996)
VERTICAL DATUM - NAVD 1988**

GPS POINT NUMBER **G104**

	US SURVEY FEET	METRIC
Northing:	3922026.647	1195436.113
Easting:	4811676.098	1466601.808
Elevation:	1228.340	374.399
Ellipsoid Height:	1132.832	345.288
Geoid 99 Height:	-95.508	-29.111

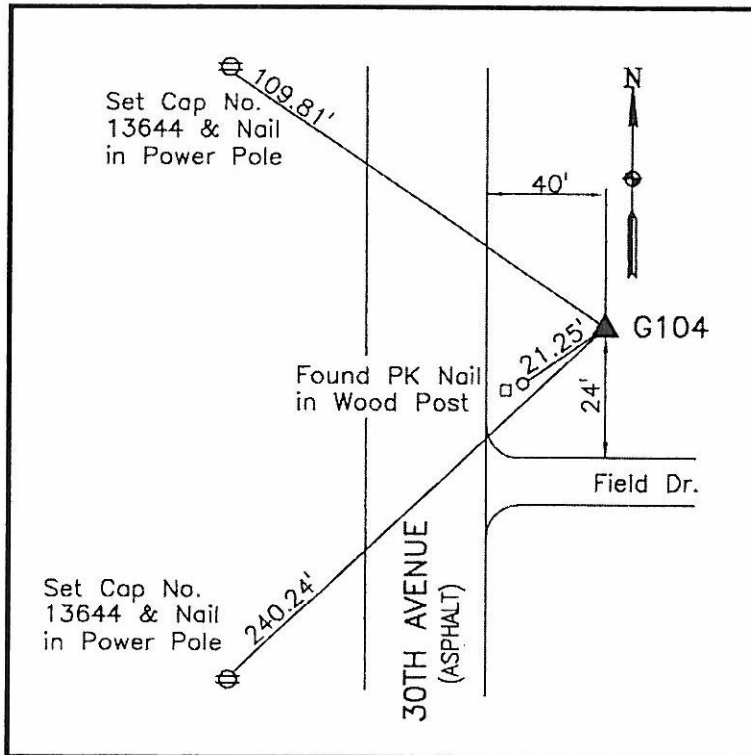
Latitude:	43°15'31.25219"N
Longitude:	93°54'40.75128"W
Scale Factor:	0.9999985507
Convergence:	-0°16'44"
Combined Factor:	0.99994450

Description:

Placed 5/8" X 6' - 0" Long Aluminum Rod with Cap Stamped G104 and NGS Style Access Cover 3" Deep.

Location:

On east side 30th Avenue - 30'± north of field entrance - 0.3± mile north of SW Corner of Section 34-T98N-R26W.



WHKS & CO.