

**WINNEBAGO COUNTY, IOWA  
GPS CONTROL MONUMENT  
IOWA NORTH ZONE (1401)  
HORIZONTAL DATUM - NAD 83 (1996)  
VERTICAL DATUM - NAVD 1988**

GPS POINT NUMBER      **G105**

	US SURVEY FEET	METRIC
Northing:	3936695.011	1199907.039
Easting:	4796364.896	1461934.944
Elevation:	1166.327	355.497
Ellipsoid Height:	1071.361	326.552
Geoid 99 Height:	-94.965	-28.946

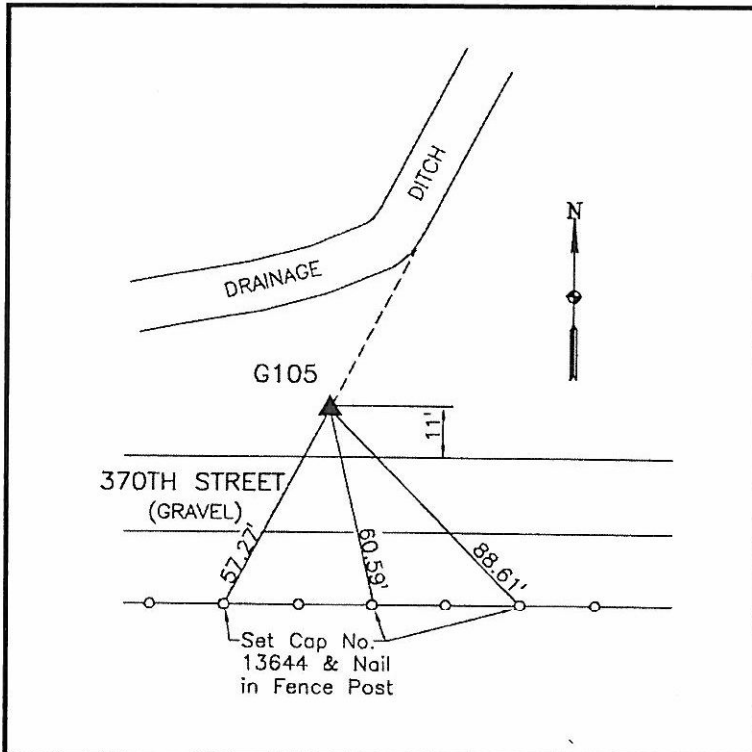
Latitude:	43°17'55.33735"N
Longitude:	93°58'08.75854"W
Scale Factor:	1.0000060112
Convergence:	-0°19'05"
Combined Factor:	0.99995490

**Description:**

Placed 5/8" X 6' - 0" Long Aluminum Rod with Cap Stamped G105 and NGS Style Access Cover 2" Deep.

**Location:**

On north side 370th Street - 300'± east of 250th Avenue - near NW Corner Section 19-T98N-R26W.



**WHKS & CO.**