

**WINNEBAGO COUNTY, IOWA
GPS CONTROL MONUMENT
IOWA NORTH ZONE (1401)
HORIZONTAL DATUM - NAD 83 (1996)
VERTICAL DATUM - NAVD 1988**

GPS POINT NUMBER **G106**

	US SURVEY FEET	METRIC
Northing:	3936587.899	1199874.391
Easting:	4811759.340	1466627.180
Elevation:	1198.068	365.172
Ellipsoid Height:	1102.730	336.113
Geoid 99 Height:	-95.338	-29.059

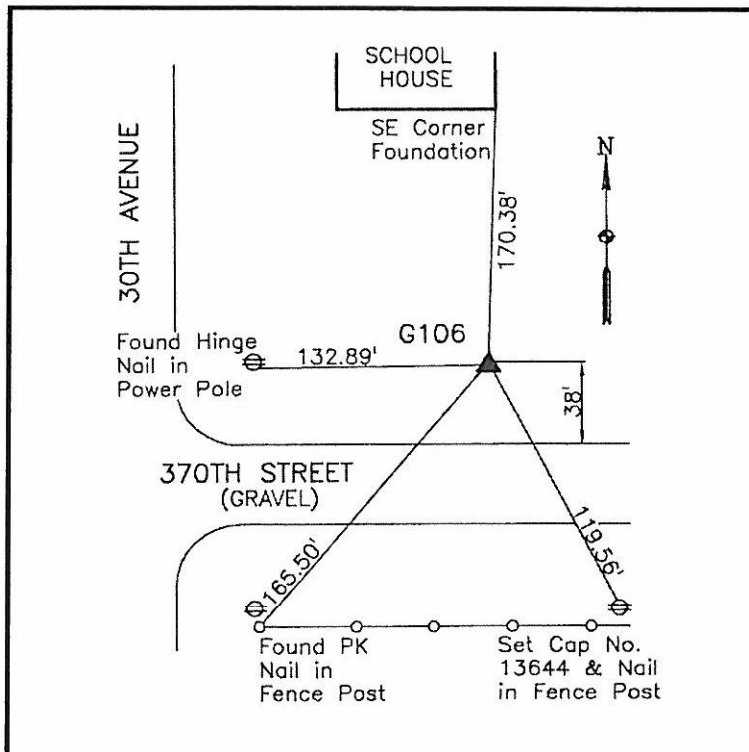
Latitude:	43°17'55.07115"N
Longitude:	93°54'40.58368"W
Scale Factor:	1.0000059970
Convergence:	-0°16'43"
Combined Factor:	0.99995338

Description:

Placed 5/8" X 6' - 0" Long Aluminum Rod with Cap Stamped G106 and NGS Style Access Cover 1" Deep.

Location:

NE Corner of 370th Street and 30th Avenue (County Road R20) - SE Corner of school site - near NW Corner of Section 22-T98N-R26W.



WHKS & CO.