

**WINNEBAGO COUNTY, IOWA  
GPS CONTROL MONUMENT  
IOWA NORTH ZONE (1401)  
HORIZONTAL DATUM - NAD 83 (1996)  
VERTICAL DATUM - NAVD 1988**

GPS POINT NUMBER **G107**

	US SURVEY FEET	METRIC
Northing:	3936555.060	1199864.382
Easting:	4827483.998	1471420.065
Elevation:	1242.154	378.609
Ellipsoid Height:	1146.450	349.439
Geoid 99 Height:	-95.705	-29.171

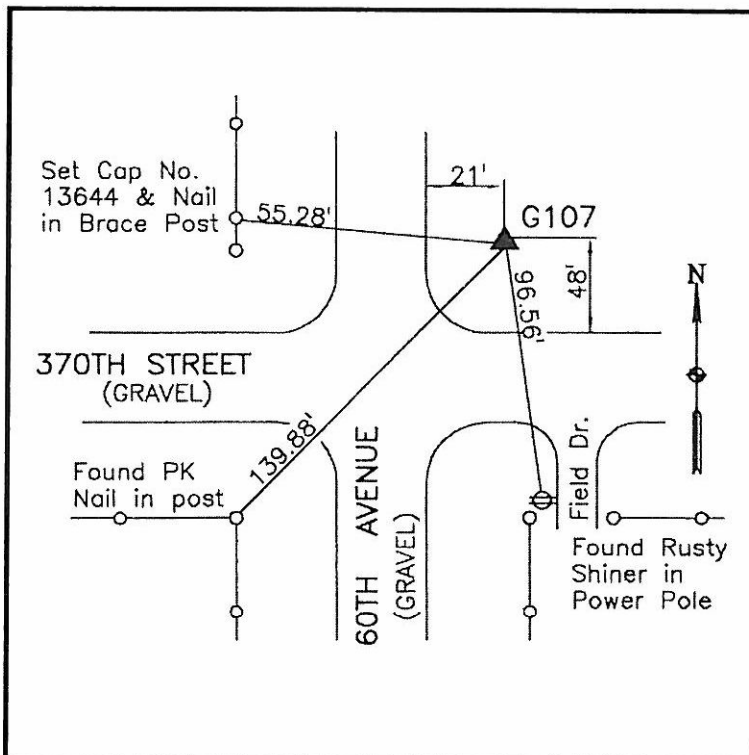
Latitude:	43°17'55.44810"N
Longitude:	93°51'07.94836"W
Scale Factor:	1.0000060171
Convergence:	-0°14'19"
Combined Factor:	0.99995132

Description:

Placed 5/8" X 6' - 0" Long Aluminum Rod with Cap Stamped G107 and NGS Style Access Cover 2 " Deep.

Location:

NE Corner of 370th Street and 60th Avenue - near NW Corner of Section 19-T98N-R25W.



**WHKS & CO.**