

**WINNEBAGO COUNTY, IOWA
GPS CONTROL MONUMENT
IOWA NORTH ZONE (1401)
HORIZONTAL DATUM - NAD 83 (1996)
VERTICAL DATUM - NAVD 1988**

GPS POINT NUMBER **G108**

	US SURVEY FEET	METRIC
Northing:	3936211.097	1199759.542
Easting:	4843134.584	1476190.373
Elevation:	1274.162	388.365
Ellipsoid Height:	1178.129	359.094
Geoid 99 Height:	-96.033	-29.271

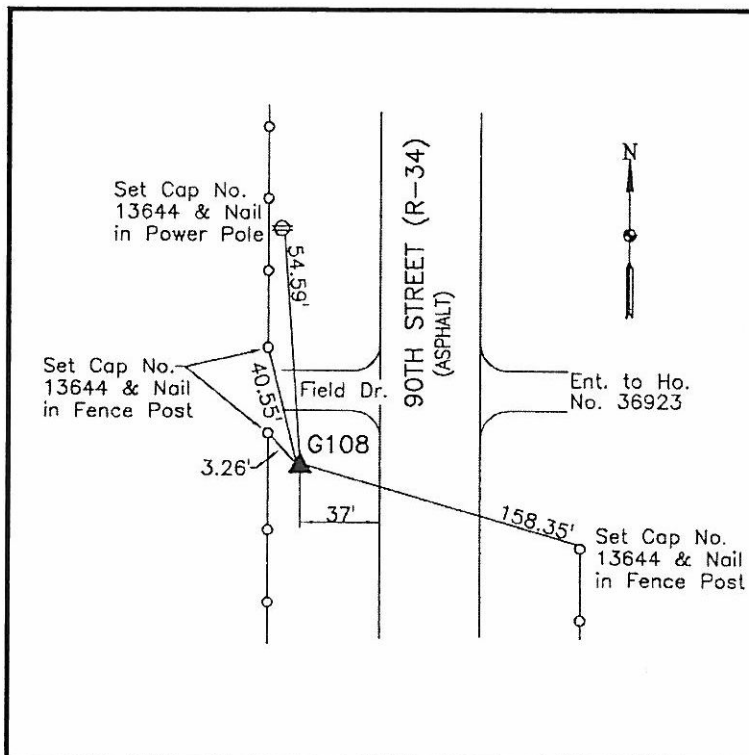
Latitude:	43°17'52.64118"N
Longitude:	93°47'36.29944"W
Scale Factor:	1.0000058671
Convergence:	-0°11'56"
Combined Factor:	0.99994966

Description:

Placed 5/8" X 6' - 0" Long Aluminum Rod with Cap Stamped G108 and NGS Style Access Cover 2" Deep.

Location:

On west side 90th Avenue (County Road R34) - 20'± south of field entrance - 300'± south of 370th Street - near NW Corner Section 22-T98N-R25W.



WHKS & CO.