

**WINNEBAGO COUNTY, IOWA
GPS CONTROL MONUMENT
IOWA NORTH ZONE (1401)
HORIZONTAL DATUM - NAD 83 (1996)
VERTICAL DATUM - NAVD 1988**

GPS POINT NUMBER **G109**

	US SURVEY FEET	METRIC
Northing:	3936324.421	1199794.083
Easting:	4858955.571	1481012.620
Elevation:	1285.767	391.902
Ellipsoid Height:	1189.479	362.554
Geoid 99 Height:	-96.288	-29.349

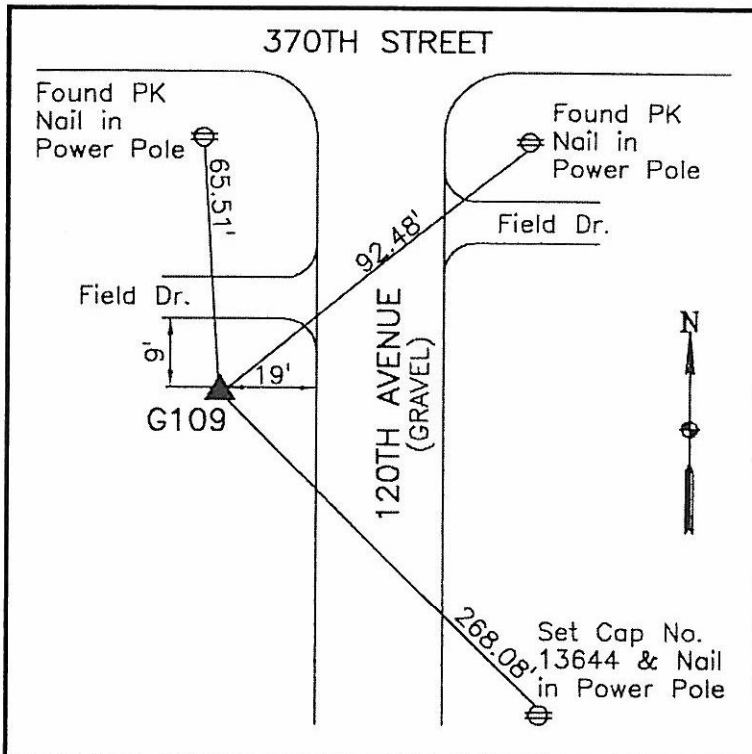
Latitude:	43°17'54.24786"N
Longitude:	93°44'02.36890"W
Scale Factor:	1.0000059529
Convergence:	-0°09'31"
Combined Factor:	0.99994920

Description:

Placed 5/8" X 6' - 0" Long Aluminum Rod with Cap Stamped G109 and NGS Style Access Cover 2 " Deep.

Location:

On west side 120th Avenue - 15'± south of field entrance - 100'± south of 370th Street - near NW Corner Section 19-T98N-R24W.



WHKS & CO.