

**WINNEBAGO COUNTY, IOWA
GPS CONTROL MONUMENT
IOWA NORTH ZONE (1401)
HORIZONTAL DATUM - NAD 83 (1996)
VERTICAL DATUM - NAVD 1988**

GPS POINT NUMBER **G110**

	US SURVEY FEET	METRIC
Northing:	3936359.693	1199804.834
Easting:	4874337.567	1485701.062
Elevation:	1269.792	387.034
Ellipsoid Height:	1173.341	357.635
Geoid 99 Height:	-96.452	-29.399

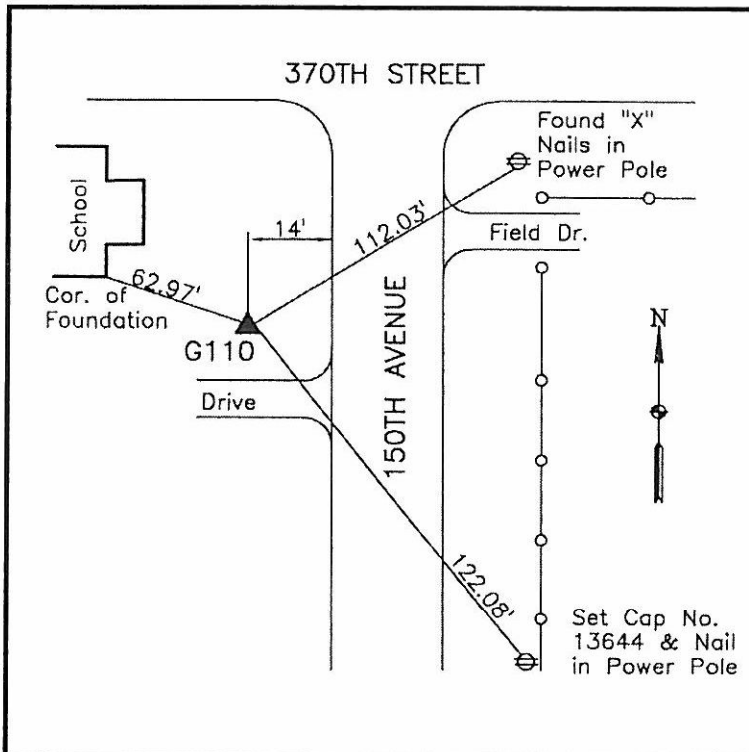
Latitude:	43°17'54.96480"N
Longitude:	93°40'34.36941"W
Scale Factor:	1.0000059913
Convergence:	-0°07'10"
Combined Factor:	0.99995001

Description:

Placed 5/8" X 6' - 0" Long Aluminum Rod with Cap Stamped G110 and NGS Style Access Cover 3 " Deep.

Location:

SW Corner of 370th Street and 150th Avenue - SE Corner of school property - near NW Corner of Section 22-T98N-R24W.



WHKS & CO.