

**WINNEBAGO COUNTY, IOWA  
GPS CONTROL MONUMENT  
IOWA NORTH ZONE (1401)  
HORIZONTAL DATUM - NAD 83 (1996)  
VERTICAL DATUM - NAVD 1988**

GPS POINT NUMBER      **G111**

	US SURVEY FEET	METRIC
Northing:	3936598.809	1199877.717
Easting:	4889711.810	1490387.141
Elevation:	1269.627	386.983
Ellipsoid Height:	1173.138	357.573
Geoid 99 Height:	-96.488	-29.410

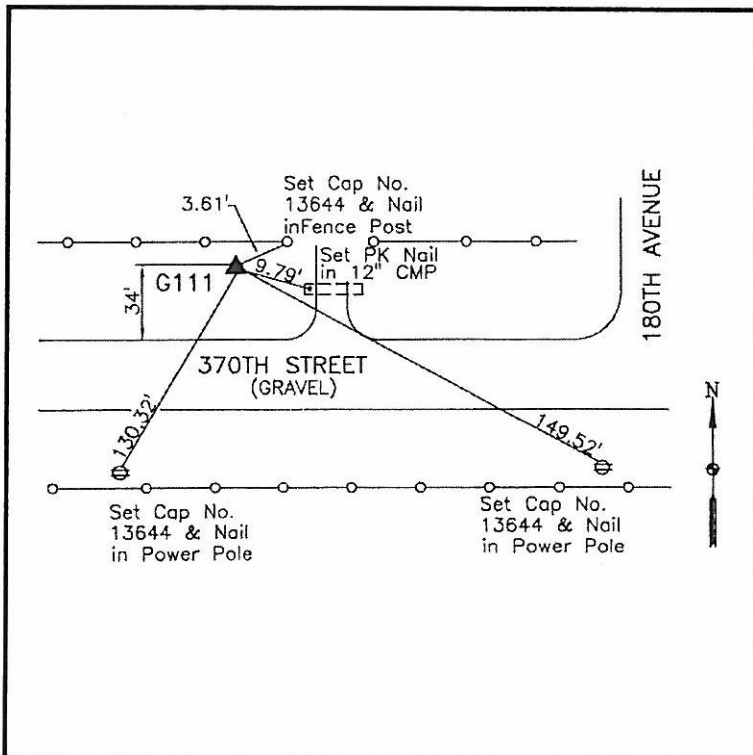
Latitude:	43°17'57.59110"N
Longitude:	93°37'06.47737"W
Scale Factor:	1.0000061318
Convergence:	-0°04'49"
Combined Factor:	0.99995016

**Description:**

Placed 5/8" X 6' - 0" Long Aluminum Rod with Cap Stamped G111 and NGS Style Access Cover 0 " Deep.

**Location:**

On north side 370th Street - 300'± west of 180th Avenue - 30'± west of field entrance - near NW Corner Section 19-T98N-R23W.



**WHKS & CO.**