

**WINNEBAGO COUNTY, IOWA
GPS CONTROL MONUMENT
IOWA NORTH ZONE (1401)
HORIZONTAL DATUM - NAD 83 (1996)
VERTICAL DATUM - NAVD 1988**

GPS POINT NUMBER **G112**

	US SURVEY FEET	METRIC
Northing:	3936408.290	1199819.646
Easting:	4906103.492	1495383.335
Elevation:	1232.055	375.531
Ellipsoid Height:	1135.718	346.167
Geoid 99 Height:	-96.338	-29.364

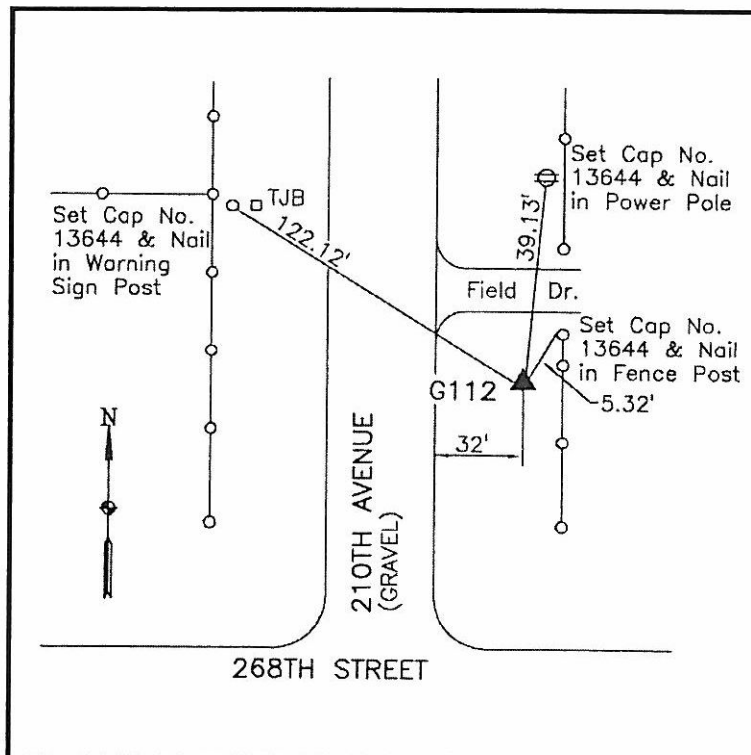
Latitude:	43°17'55.87732"N
Longitude:	93°33'24.81809"W
Scale Factor:	1.0000060401
Convergence:	-0°02'19"
Combined Factor:	0.99995185

Description:

Placed 5/8" X 6' - 0" Long
Aluminum Rod with Cap
Stamped G112 and NGS Style
Access Cover 1 " Deep.

Location:

On east side 210th Avenue -
20'± south of field entrance -
0.2± mile north of 268th
Street - near NW Corner of
Section 22-T98N-R23W.



WHKS & CO.