

**WINNEBAGO COUNTY, IOWA
GPS CONTROL MONUMENT
IOWA NORTH ZONE (1401)
HORIZONTAL DATUM - NAD 83 (1996)
VERTICAL DATUM - NAVD 1988**

GPS POINT NUMBER **G113**

	US SURVEY FEET	METRIC
Northing:	3936475.972	1199840.276
Easting:	4921842.155	1500180.489
Elevation:	1221.399	372.283
Ellipsoid Height:	1125.411	343.026
Geoid 99 Height:	-95.989	-29.257

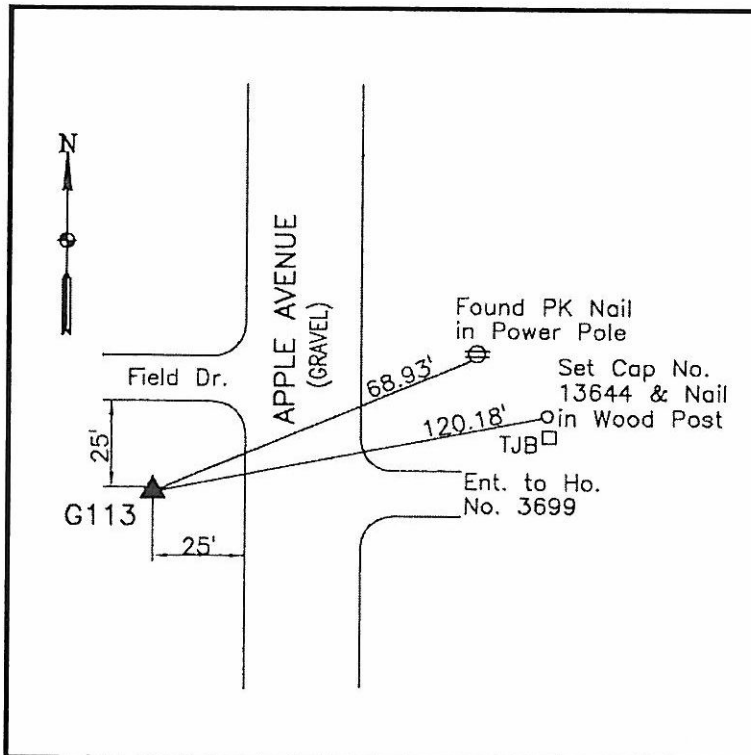
Latitude:	43°17'56.59605"N
Longitude:	93°29'51.99258"W
Scale Factor:	1.0000060785
Convergence:	0°00'05"
Combined Factor:	0.99995238

Description:

Placed 5/8" X 6' - 0" Long Aluminum Rod with Cap Stamped G113 and NGS Style Access Cover 2 " Deep.

Location:

On west side Apple Avenue - 30'± south of field entrance - near NE Corner Section 24-T98N-R23W.



WHKS & CO.