

**WINNEBAGO COUNTY, IOWA  
GPS CONTROL MONUMENT  
IOWA NORTH ZONE (1401)  
HORIZONTAL DATUM - NAD 83 (1996)  
VERTICAL DATUM - NAVD 1988**

GPS POINT NUMBER      **G114**

	US SURVEY FEET	METRIC
Northing:	3952522.123	1204731.152
Easting:	4921847.792	1500182.207
Elevation:	1248.425	380.521
Ellipsoid Height:	1152.210	351.194
Geoid 99 Height:	-96.215	-29.326

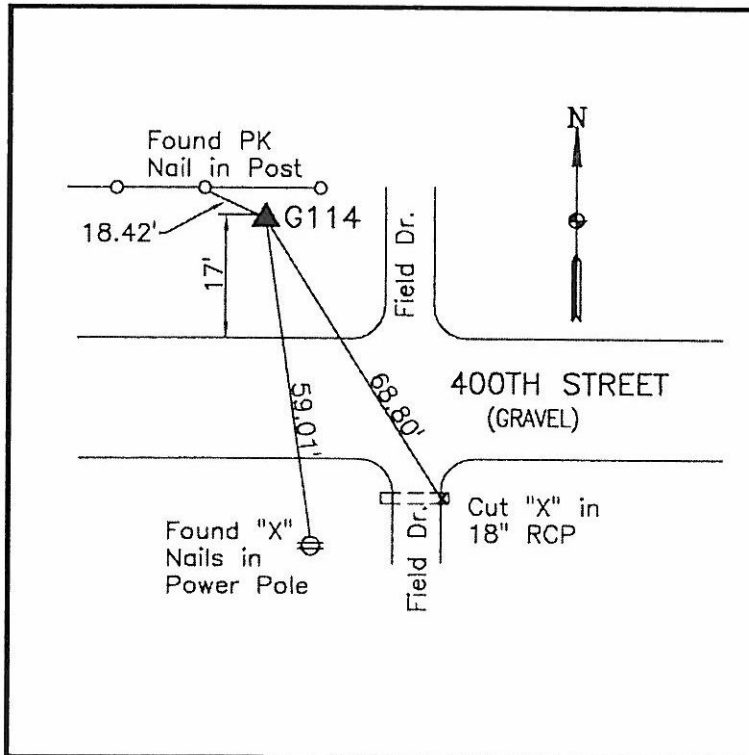
Latitude:	43°20'35.07608"N
Longitude:	93°29'51.91059"W
Scale Factor:	1.0000148566
Convergence:	0°00'05"
Combined Factor:	0.99995988

**Description:**

Placed 5/8" X 6' - 0" Long Aluminum Rod with Cap Stamped G114 and NGS Style Access Cover 2" Deep.

**Location:**

On north side 400th Street - 20'± west of field entrance - near NE Corner Section 1-T98N-R23W.



**WHKS & CO.**