

**WINNEBAGO COUNTY, IOWA
GPS CONTROL MONUMENT
IOWA NORTH ZONE (1401)
HORIZONTAL DATUM - NAD 83 (1996)
VERTICAL DATUM - NAVD 1988**

GPS POINT NUMBER **G115**

	US SURVEY FEET	METRIC
Northing:	3952101.888	1204603.065
Easting:	4905980.963	1495345.988
Elevation:	1276.586	389.104
Ellipsoid Height:	1180.119	359.701
Geoid 99 Height:	-96.467	-29.403

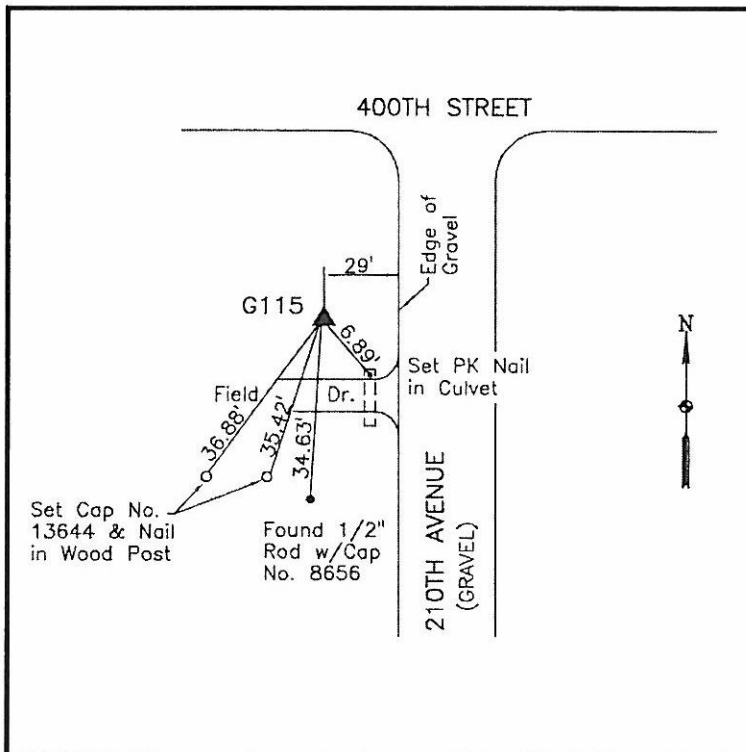
Latitude:	43°20'30.87455"N
Longitude:	93°33'26.61906"W
Scale Factor:	1.0000146162
Convergence:	-0°02'20"
Combined Factor:	0.99995831

Description:

Placed 5/8" X 6' - 0" Long Aluminum Rod with Cap Stamped G115 and NGS Style Access Cover 2" Deep.

Location:

On west side of 210th Avenue - 30'± north of field entrance - 300'± south of 400th street (County Road A38) - near NW Corner Section 3-T98N-R23W.



WHKS & CO.