

**WINNEBAGO COUNTY, IOWA  
GPS CONTROL MONUMENT  
IOWA NORTH ZONE (1401)  
HORIZONTAL DATUM - NAD 83 (1996)  
VERTICAL DATUM - NAVD 1988**

GPS POINT NUMBER **G116**

	US SURVEY FEET	METRIC
Northing:	3951624.618	1204457.592
Easting:	4890130.705	1490514.820
Elevation:	1249.327	380.796
Ellipsoid Height:	1152.781	351.368
Geoid 99 Height:	-96.546	-29.427

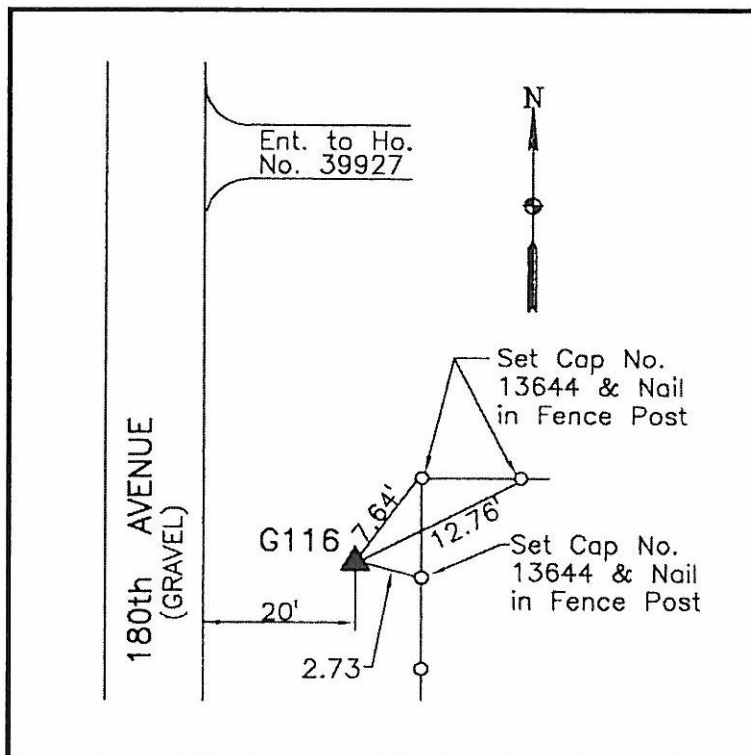
Latitude:	43°20'25.99939"N
Longitude:	93°37'01.09399"W
Scale Factor:	1.0000143378
Convergence:	-0°04'45"
Combined Factor:	0.99995934

**Description:**

Placed 5/8" X 6' - 0" Long Aluminum Rod with Cap Stamped G116 and NGS Style Access Cover 1" Deep.

**Location:**

On east side 180th Avenue - 10'± south of corner post - 0.1± mile south of 400th Street (County Road A38) - near NW Corner Section 6-T98N-R23W.



**WHKS & CO.**