

**WINNEBAGO COUNTY, IOWA
GPS CONTROL MONUMENT
IOWA NORTH ZONE (1401)
HORIZONTAL DATUM - NAD 83 (1996)
VERTICAL DATUM - NAVD 1988**

GPS POINT NUMBER **G117**

	US SURVEY FEET	METRIC
Northing:	3952346.600	1204677.653
Easting:	4874255.271	1485675.978
Elevation:	1273.003	388.012
Ellipsoid Height:	1176.567	358.618
Geoid 99 Height:	-96.437	-29.394

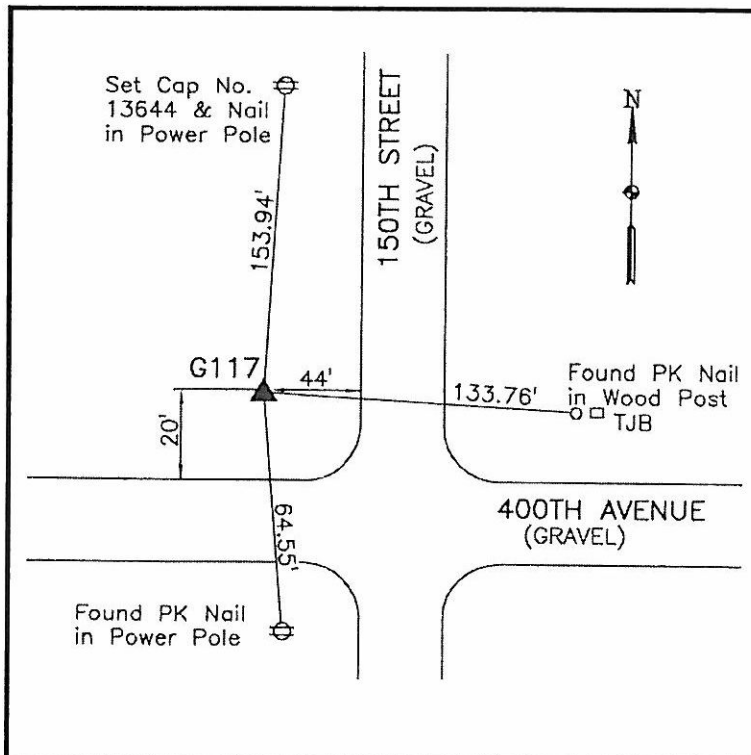
Latitude:	43°20'32.85770"N
Longitude:	93°40'35.93398"W
Scale Factor:	1.0000147296
Convergence:	-0°07'11"
Combined Factor:	0.99995859

Description:

Placed 5/8" X 6' - 0" Long Aluminum Rod with Cap Stamped G117 and NGS Style Access Cover 2" Deep.

Location:

NW Corner of 400th Street and 150th Avenue - near NW Corner of Section 3-T98N-R24W.



WHKS & CO.