

**WINNEBAGO COUNTY, IOWA
GPS CONTROL MONUMENT
IOWA NORTH ZONE (1401)
HORIZONTAL DATUM - NAD 83 (1996)
VERTICAL DATUM - NAVD 1988**

GPS POINT NUMBER **G118**

	US SURVEY FEET	METRIC
Northing:	3952299.903	1204663.420
Easting:	4860298.536	1481421.957
Elevation:	1287.982	392.578
Ellipsoid Height:	1191.736	363.242
Geoid 99 Height:	-96.246	-29.336

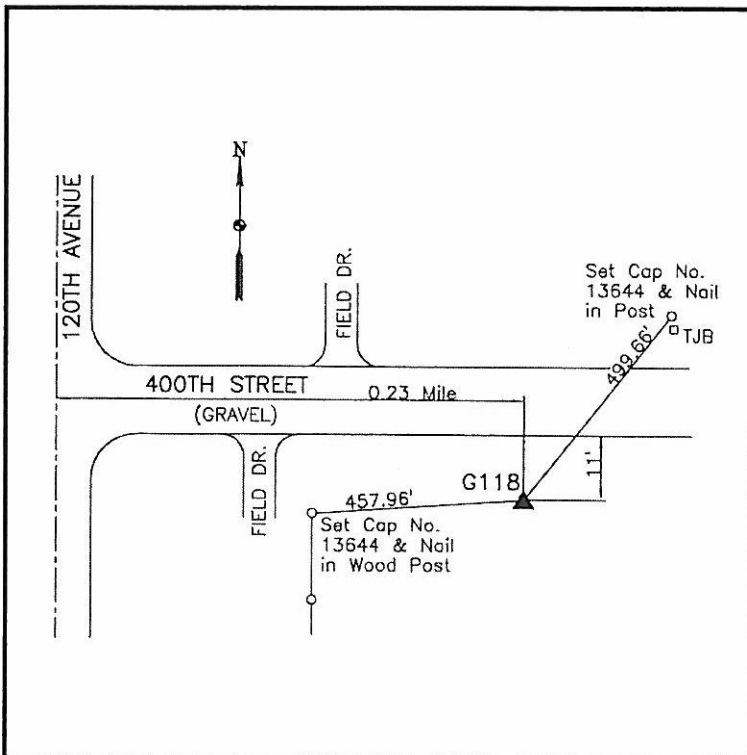
Latitude:	43°20'32.06570"N
Longitude:	93°43'44.79437"W
Scale Factor:	1.0000146843
Convergence:	-0°09'19"
Combined Factor:	0.99995783

Description:

Placed 5/8" X 6' - 0" Long Aluminum Rod with Cap Stamped G118 and NGS Style Access Cover 1" Deep.

Location:

On south side of 400th Street - 0.25± mile east of 120th Avenue - near NW Corner Section 6-T98N-R24W.



WHKS & CO.