

**WINNEBAGO COUNTY, IOWA
GPS CONTROL MONUMENT
IOWA NORTH ZONE (1401)
HORIZONTAL DATUM - NAD 83 (1996)
VERTICAL DATUM - NAVD 1988**

GPS POINT NUMBER **G119**

	US SURVEY FEET	METRIC
Northing:	3952358.680	1204681.335
Easting:	4843187.920	1476206.630
Elevation:	1277.757	389.461
Ellipsoid Height:	1181.828	360.222
Geoid 99 Height:	-95.929	-29.239

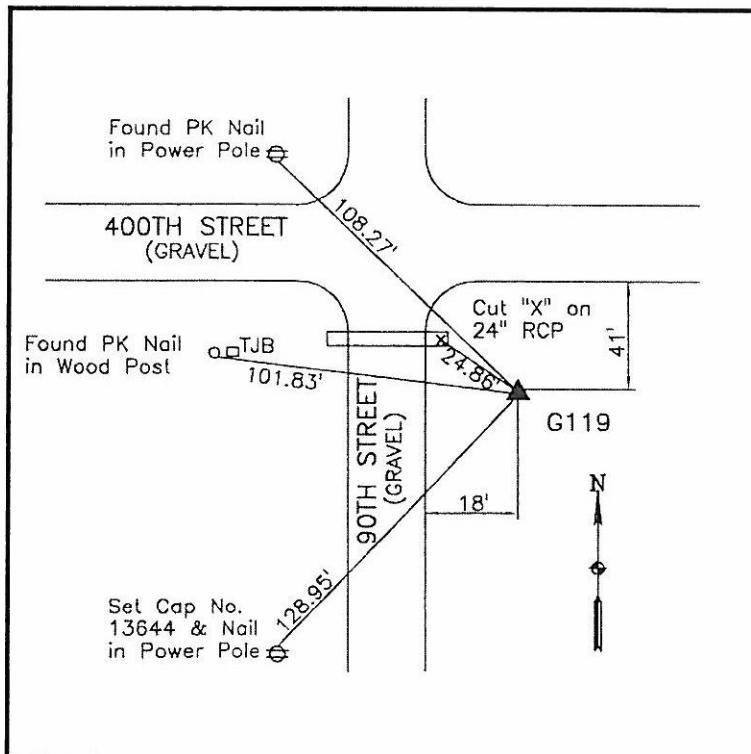
Latitude:	43°20'32.12394"N
Longitude:	93°47'36.33609"W
Scale Factor:	1.0000146876
Convergence:	-0°11'56"
Combined Factor:	0.99995830

Description:

Placed 5/8" X 6' - 0" Long Aluminum Rod with Cap Stamped G119 and NGS Style Access Cover 1" Deep.

Location:

SE Corner of 400th Street and 90th Avenue - near NW Corner Section 3-T98N-R25W.



WHKS & CO.