

**WINNEBAGO COUNTY, IOWA  
GPS CONTROL MONUMENT  
IOWA NORTH ZONE (1401)  
HORIZONTAL DATUM - NAD 83 (1996)  
VERTICAL DATUM - NAVD 1988**

GPS POINT NUMBER      **G120**

	US SURVEY FEET	METRIC
Northing:	3952460.843	1204712.474
Easting:	4827562.984	1471444.140
Elevation:	1204.698	367.193
Ellipsoid Height:	1109.130	338.064
Geoid 99 Height:	-95.568	-29.129

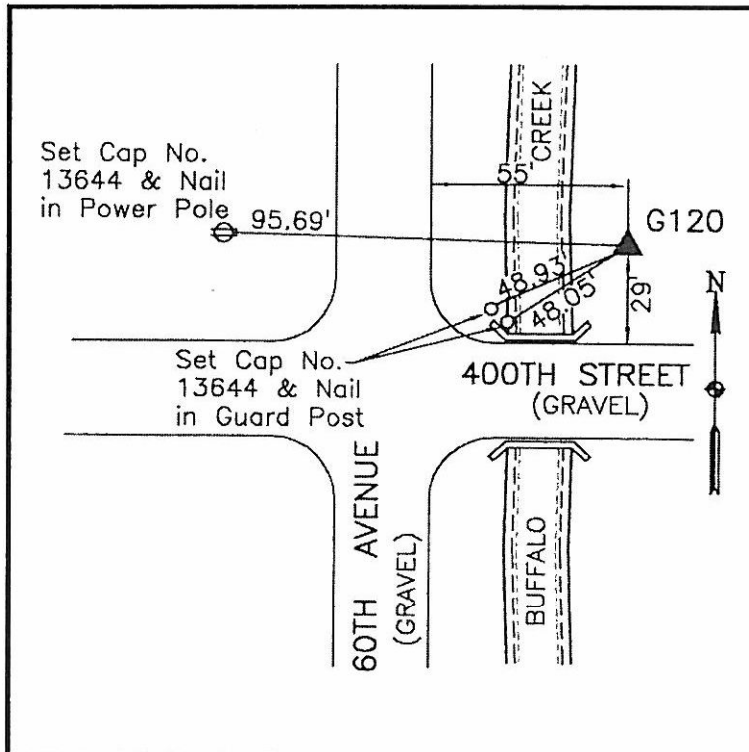
Latitude:	43°20'32.54370"N
Longitude:	93°51'07.77624"W
Scale Factor:	1.0000147116
Convergence:	-0°14'19"
Combined Factor:	0.99996179

**Description:**

Placed 5/8" X 6' - 0" Long Aluminum Rod with Cap Stamped G120 and NGS Style Access Cover 1 " Deep.

**Location:**

At NE Corner of 400th Street and 60th Avenue - on east side drainage ditch - 25'± north of NE Corner wood bridge - near NW Corner Section 6-T98N-R25W.



**WHKS & CO.**