

**WINNEBAGO COUNTY, IOWA
GPS CONTROL MONUMENT
IOWA NORTH ZONE (1401)
HORIZONTAL DATUM - NAD 83 (1996)
VERTICAL DATUM - NAVD 1988**

GPS POINT NUMBER **G121**

	US SURVEY FEET	METRIC
Northing:	3952437.540	1204705.372
Easting:	4811727.612	1466617.509
Elevation:	1182.807	360.520
Ellipsoid Height:	1087.649	331.516
Geoid 99 Height:	-95.158	-29.004

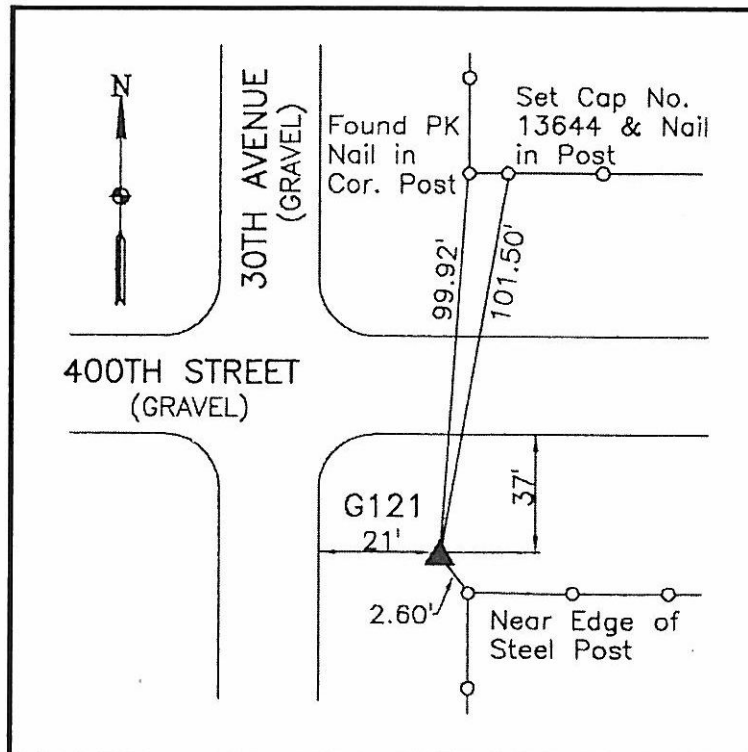
Latitude:	43°20'31.60701"N
Longitude:	93°54'42.05642"W
Scale Factor:	1.0000146581
Convergence:	-0°16'44"
Combined Factor:	0.99996277

Description:

Placed 5/8" X 6' - 0" Long Aluminum Rod with Cap Stamped G121 and NGS Style Access Cover 2" Deep.

Location:

SE Corner of 400th Street and 30th Avenue - near NW Corner Section 3-T98N-R26W.



WHKS & CO.