

**WINNEBAGO COUNTY, IOWA
GPS CONTROL MONUMENT
IOWA NORTH ZONE (1401)
HORIZONTAL DATUM - NAD 83 (1996)
VERTICAL DATUM - NAVD 1988**

GPS POINT NUMBER **G122**

	US SURVEY FEET	METRIC
Northing:	3952580.873	1204749.060
Easting:	4796221.745	1461891.312
Elevation:	1192.205	363.385
Ellipsoid Height:	1097.457	334.506
Geoid 99 Height:	-94.748	-28.879

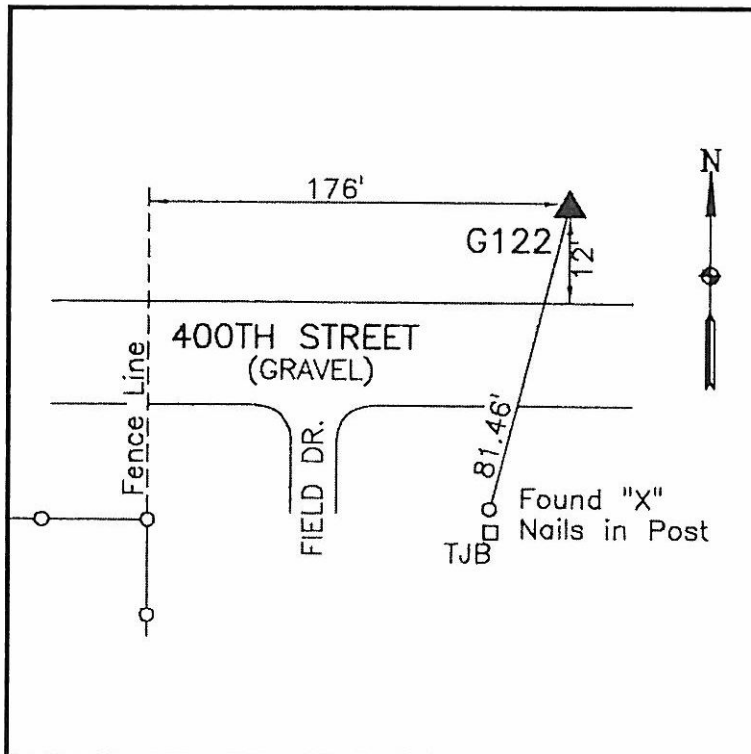
Latitude:	43°20'32.22405"N
Longitude:	93°58'11.88847"W
Scale Factor:	1.0000146933
Convergence:	-0°19'07"
Combined Factor:	0.99996233

Description:

Placed 5/8" X 6' - 0" Long Aluminum Rod with Cap Stamped G122 and NGS Style Access Cover 1 " Deep.

Location:

On north side 400th Street - 175'± east of county line - near NW Corner Section 6-T98N-R26W.



WHKS & CO.