

**WINNEBAGO COUNTY, IOWA
GPS CONTROL MONUMENT
IOWA NORTH ZONE (1401)
HORIZONTAL DATUM - NAD 83 (1996)
VERTICAL DATUM - NAVD 1988**

GPS POINT NUMBER **G123**

	US SURVEY FEET	METRIC
Northing:	3968437.863	1209582.280
Easting:	4796407.591	1461947.958
Elevation:	1173.901	357.806
Ellipsoid Height:	1079.356	328.988
Geoid 99 Height:	-94.545	-28.817

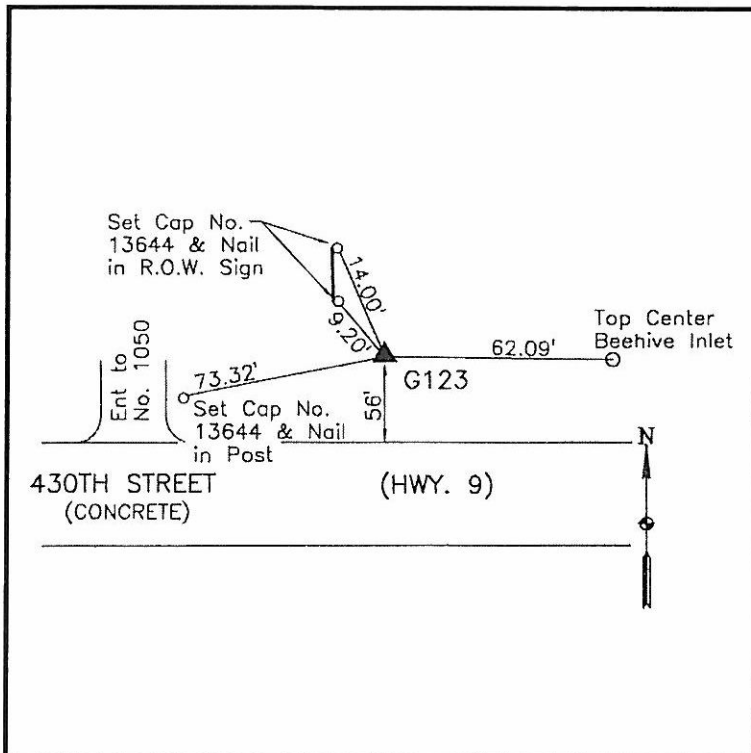
Latitude:	43°23'08.84105"N
Longitude:	93°58'10.56557"W
Scale Factor:	1.0000239421
Convergence:	-0°19'06"
Combined Factor:	0.99997244

Description:

Placed 5/8" X 6' - 0" Long Aluminum Rod with Cap Stamped G123 and NGS Style Access Cover 2 " Deep.

Location:

On north side 430th Street (Highway 9) - near SE Corner of Ron's LP Tank Service - near NW Corner Section 19-T99N-R26W.



WHKS & CO.