

**WINNEBAGO COUNTY, IOWA
GPS CONTROL MONUMENT
IOWA NORTH ZONE (1401)
HORIZONTAL DATUM - NAD 83 (1996)
VERTICAL DATUM - NAVD 1988**

GPS POINT NUMBER **G124**

	US SURVEY FEET	METRIC
Northing:	3968485.996	1209596.951
Easting:	4811723.960	1466616.396
Elevation:	1191.555	363.187
Ellipsoid Height:	1096.573	334.236
Geoid 99 Height:	-94.983	-28.951

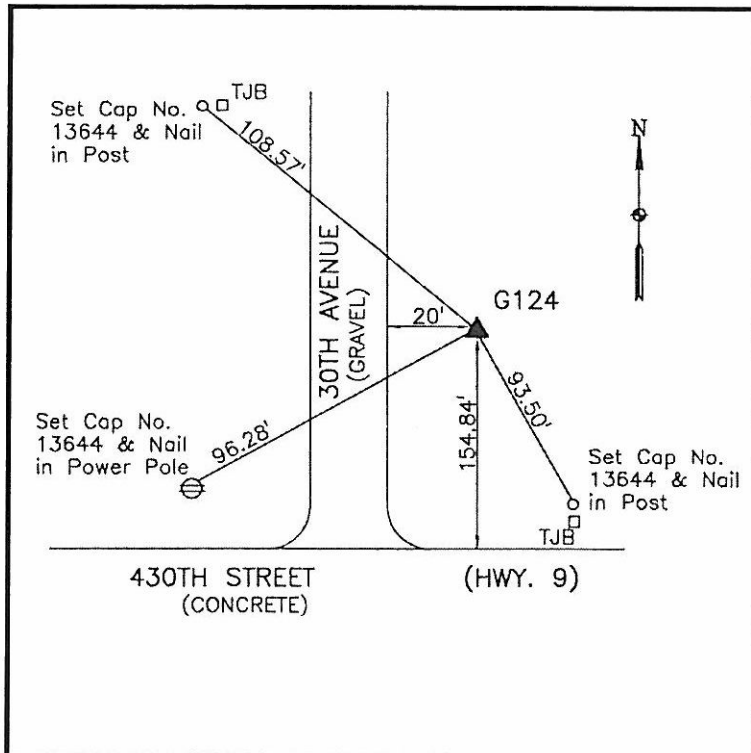
Latitude:	43°23'10.10515"N
Longitude:	93°54'43.16417"W
Scale Factor:	1.0000240191
Convergence:	-0°16'45"
Combined Factor:	0.99997170

Description:

Placed 5/8" X 6' - 0" Long Aluminum Rod with Cap Stamped G124 and NGS Style Access Cover 1 " Deep.

Location:

NE Corner 430th Street (Highway 9) and 30th Avenue - 30'± south of field entrance - 5'± south of ROW sign - near NW Corner Section 22-T99N-R26W.



WHKS & CO.