

**WINNEBAGO COUNTY, IOWA  
GPS CONTROL MONUMENT  
IOWA NORTH ZONE (1401)  
HORIZONTAL DATUM - NAD 83 (1996)  
VERTICAL DATUM - NAVD 1988**

GPS POINT NUMBER **G125**

	US SURVEY FEET	METRIC
Northing:	3968148.110	1209493.963
Easting:	4827601.677	1471455.934
Elevation:	1202.798	366.614
Ellipsoid Height:	1107.355	337.523
Geoid 99 Height:	-95.443	-29.091

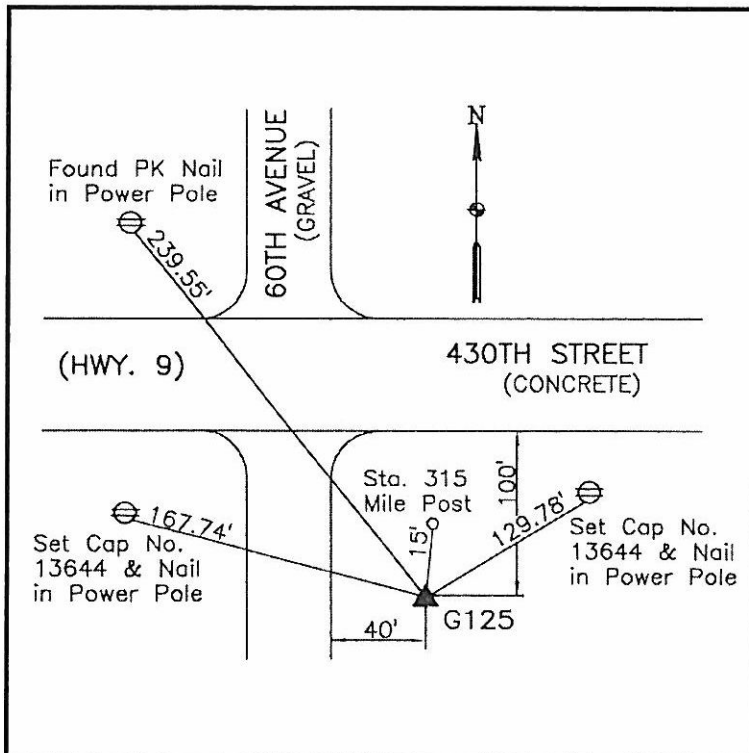
Latitude:	43°23'07.47693"N
Longitude:	93°51'08.13719"W
Scale Factor:	1.0000238590
Convergence:	-0°14'19"
Combined Factor:	0.99997103

**Description:**

Placed 5/8" X 6' - 0" Long Aluminum Rod with Cap Stamped G125 and NGS Style Access Cover 1 " Deep.

**Location:**

SE Corner 430th Street (Highway 9) and 60th Avenue - 15'± west and 15'± south of Station 315 sign - near NW Corner Section 19-T99N-R25W.



**WHKS & CO.**