

**WINNEBAGO COUNTY, IOWA
GPS CONTROL MONUMENT
IOWA NORTH ZONE (1401)
HORIZONTAL DATUM - NAD 83 (1996)
VERTICAL DATUM - NAVD 1988**

GPS POINT NUMBER **G126**

	US SURVEY FEET	METRIC
Northing:	3968042.815	1209461.869
Easting:	4843249.131	1476225.287
Elevation:	1237.189	377.096
Ellipsoid Height:	1141.355	347.886
Geoid 99 Height:	-95.834	-29.210

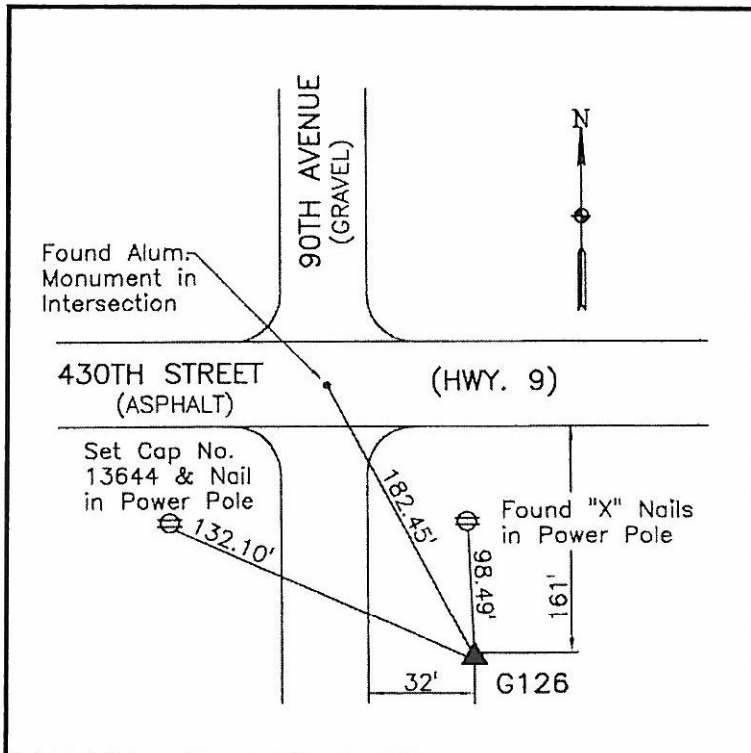
Latitude:	43°23'07.02716"N
Longitude:	93°47'36.24438"W
Scale Factor:	1.0000238317
Convergence:	-0°11'56"
Combined Factor:	0.99996938

Description:

Placed 5/8" X 6' - 0" Long Aluminum Rod with Cap Stamped G126 and NGS Style Access Cover 2 " Deep.

Location:

SE Corner 430th Street (Highway 9) and 90th Avenue - 40± north of field entrance - 5± north of ROW sign - near NW Corner of Section 22-T99N-R25W.



WHKS & CO.