

**WINNEBAGO COUNTY, IOWA  
GPS CONTROL MONUMENT  
IOWA NORTH ZONE (1401)  
HORIZONTAL DATUM - NAD 83 (1996)  
VERTICAL DATUM - NAVD 1988**

GPS POINT NUMBER **G127**

	US SURVEY FEET	METRIC
Northing:	3968148.321	1209494.027
Easting:	4859081.086	1481050.877
Elevation:	1255.027	382.533
Ellipsoid Height:	1158.871	353.225
Geoid 99 Height:	-96.155	-29.308

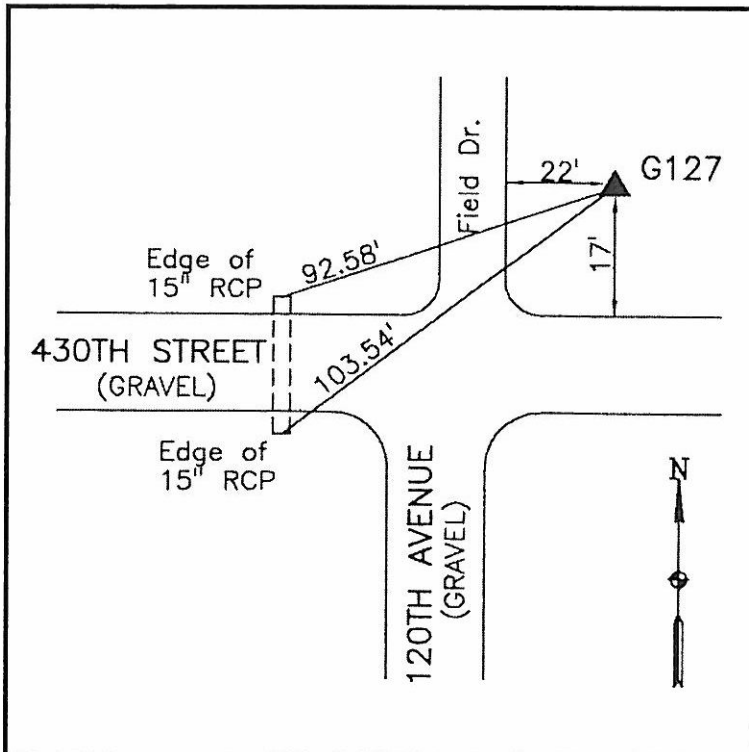
Latitude:	43°23'08.55675"N
Longitude:	93°44'01.86204"W
Scale Factor:	1.0000239248
Convergence:	-0°09'31"
Combined Factor:	0.99996863

**Description:**

Placed 5/8" X 6' - 0" Long Aluminum Rod with Cap Stamped G127 and NGS Style Access Cover 1 " Deep.

**Location:**

NE Corner 430th Street and 120th Avenue - near NW Corner Section 19-T99N-R24W.



**WHKS & CO.**