

**WINNEBAGO COUNTY, IOWA
GPS CONTROL MONUMENT
IOWA NORTH ZONE (1401)
HORIZONTAL DATUM - NAD 83 (1996)
VERTICAL DATUM - NAVD 1988**

GPS POINT NUMBER **G128**

	US SURVEY FEET	METRIC
Northing:	3967827.251	1209396.165
Easting:	4874378.680	1485713.593
Elevation:	1238.143	377.387
Ellipsoid Height:	1141.746	348.005
Geoid 99 Height:	-96.397	-29.382

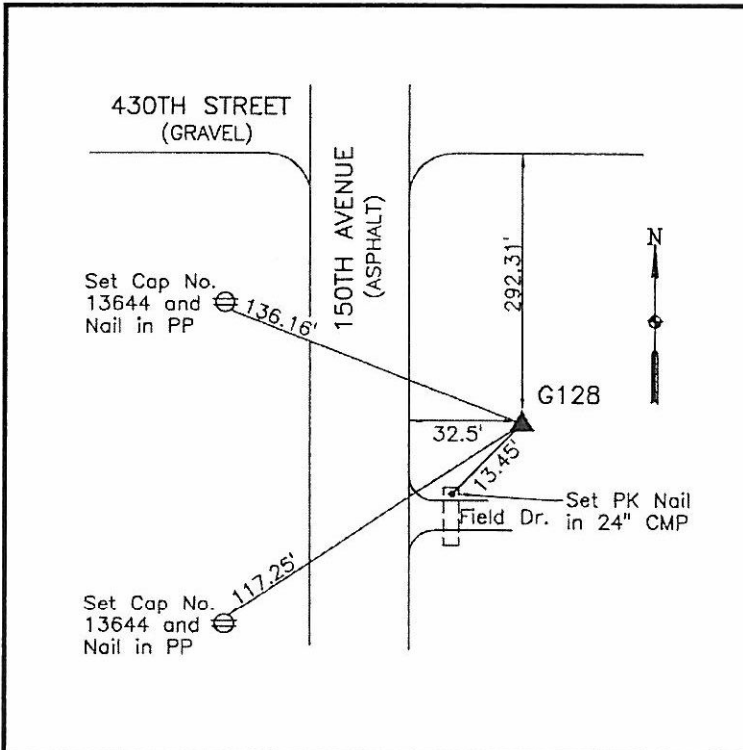
Latitude:	43°23'05.75230"N
Longitude:	93°40'34.70088"W
Scale Factor:	1.0000237541
Convergence:	-0°07'10"
Combined Factor:	0.99996928

Description:

Placed 5/8" X 6' - 0" Long Aluminum Rod with Cap Stamped G128 and NGS Style Access Cover 1 " Deep.

Location:

On east side 150th Avenue (County Road R50) - 300'± south of 430th Street - 20'± north of field entrance - near NW Corner Section 22-T99N-R24W.



WHKS & CO.