

**WINNEBAGO COUNTY, IOWA
GPS CONTROL MONUMENT
IOWA NORTH ZONE (1401)
HORIZONTAL DATUM - NAD 83 (1996)
VERTICAL DATUM - NAVD 1988**

GPS POINT NUMBER **G129**

	US SURVEY FEET	METRIC
Northing:	3968089.853	1209476.206
Easting:	4890054.910	1490491.718
Elevation:	1264.155	385.315
Ellipsoid Height:	1167.610	355.888
Geoid 99 Height:	-96.545	-29.427

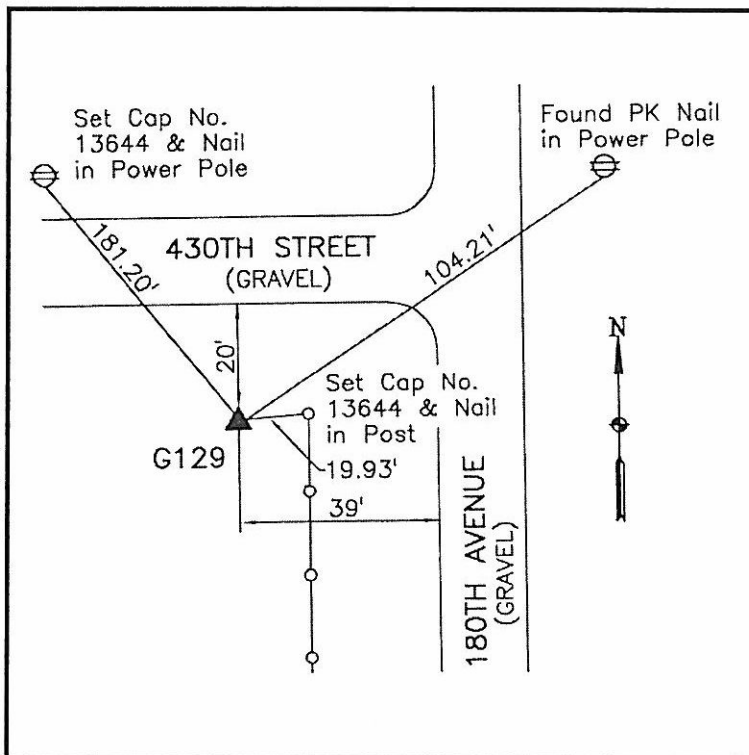
Latitude:	43°23'08.61470"N
Longitude:	93°37'02.42886"W
Scale Factor:	1.0000239283
Convergence:	-0°04'46"
Combined Factor:	0.99996822

Description:

Placed 5/8" X 6' - 0" Long Aluminum Rod with Cap Stamped G129 and NGS Style Access Cover 1 " Deep.

Location:

SW Corner of 430th Street and 180th Avenue - near NW Corner Section 19-T99N-R23W.



WHKS & CO.