

**WINNEBAGO COUNTY, IOWA
GPS CONTROL MONUMENT
IOWA NORTH ZONE (1401)
HORIZONTAL DATUM - NAD 83 (1996)
VERTICAL DATUM - NAVD 1988**

GPS POINT NUMBER **G130**

	US SURVEY FEET	METRIC
Northing:	3968253.186	1209525.990
Easting:	4906037.882	1495363.337
Elevation:	1290.109	393.226
Ellipsoid Height:	1193.570	363.801
Geoid 99 Height:	-96.540	-29.425

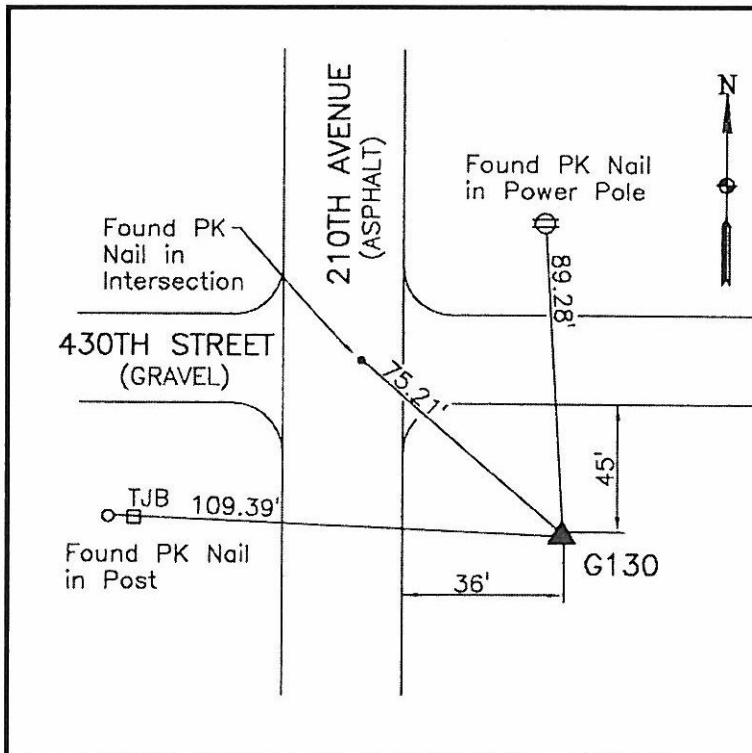
Latitude:	43°23'10.39080"N
Longitude:	93°33'25.99676"W
Scale Factor:	1.0000240365
Convergence:	-0°02'20"
Combined Factor:	0.99996709

Description:

Placed 5/8" X 6' - 0" Long Aluminum Rod with Cap Stamped G130 and NGS Style Access Cover 2 " Deep.

Location:

SE Corner of 430th Street and 210th Avenue (County Road R72) - near NW Corner Section 22-T99N-R23W.



WHKS & CO.