

**WINNEBAGO COUNTY, IOWA
GPS CONTROL MONUMENT
IOWA NORTH ZONE (1401)
HORIZONTAL DATUM - NAD 83 (1996)
VERTICAL DATUM - NAVD 1988**

GPS POINT NUMBER **G132**

| | US SURVEY FEET | METRIC |
|-------------------|----------------|-------------|
| Northing: | 3984250.395 | 1214401.949 |
| Easting: | 4921826.841 | 1500175.821 |
| Elevation: | 1294.698 | 394.625 |
| Ellipsoid Height: | 1198.236 | 365.223 |
| Geoid 99 Height: | -96.462 | -29.402 |

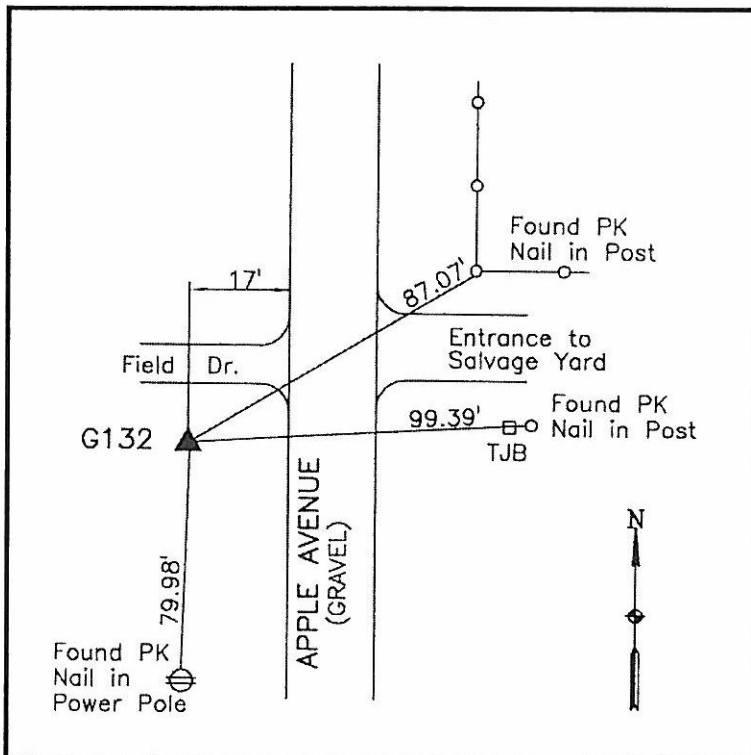
| | |
|------------------|------------------|
| Latitude: | 43°25'48.43289"N |
| Longitude: | 93°29'52.18308"W |
| Scale Factor: | 1.0000339647 |
| Convergence: | 0°00'05" |
| Combined Factor: | 0.99997679 |

Description:

Placed 5/8" X 6' - 0" Long Aluminum Rod with Cap Stamped G132 and NGS Style Access Cover 2 " Deep.

Location:

On west side Apple Avenue - 30'± south of field entrance - SW Corner intersection with entrance to salvage yard - near NE Corner Section 1-T99N-R23W.



WHKS & CO.