

**WINNEBAGO COUNTY, IOWA  
GPS CONTROL MONUMENT  
IOWA NORTH ZONE (1401)  
HORIZONTAL DATUM - NAD 83 (1996)  
VERTICAL DATUM - NAVD 1988**

GPS POINT NUMBER **G133**

	US SURVEY FEET	METRIC
Northing:	3984263.937	1214406.077
Easting:	4906032.293	1495361.634
Elevation:	1262.919	384.938
Ellipsoid Height:	1166.359	355.507
Geoid 99 Height:	-96.560	-29.432

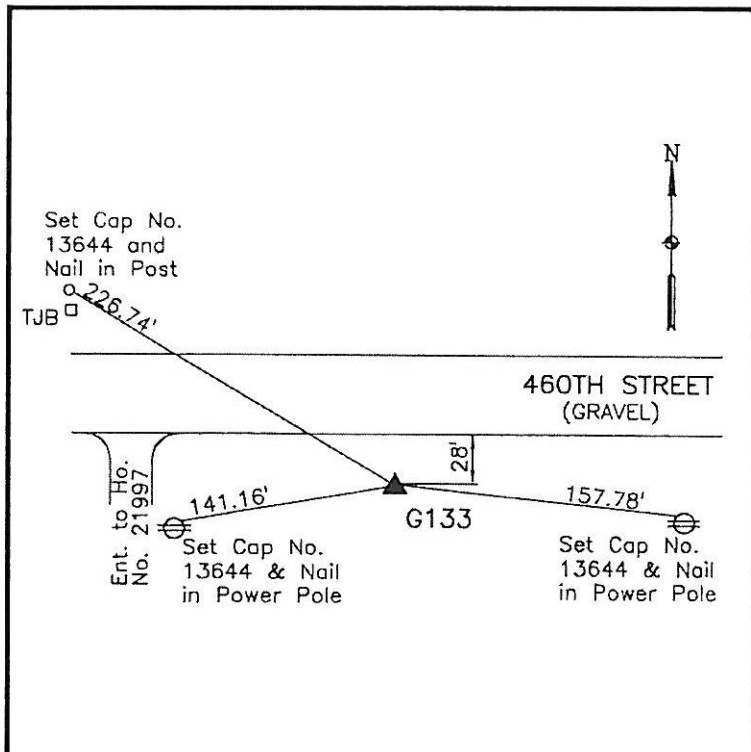
Latitude:	43°25'48.51578"N
Longitude:	93°33'26.21935"W
Scale Factor:	1.0000339701
Convergence:	-0°02'20"
Combined Factor:	0.99997832

**Description:**

Placed 5/8" X 6' - 0" Long Aluminum Rod with Cap Stamped G133 and NGS Style Access Cover 1" Deep.

**Location:**

On south side 460th Street - NE Corner of Acreage No. 21997 (Raymond Peterson) - near NW Corner Section 3-T99N-R23W.



**WHKS & CO.**