

**WINNEBAGO COUNTY, IOWA
GPS CONTROL MONUMENT
IOWA NORTH ZONE (1401)
HORIZONTAL DATUM - NAD 83 (1996)
VERTICAL DATUM - NAVD 1988**

GPS POINT NUMBER **G134**

	US SURVEY FEET	METRIC
Northing:	3984234.322	1214397.050
Easting:	4890056.244	1490492.124
Elevation:	1288.435	392.716
Ellipsoid Height:	1191.935	363.302
Geoid 99 Height:	-96.501	-29.413

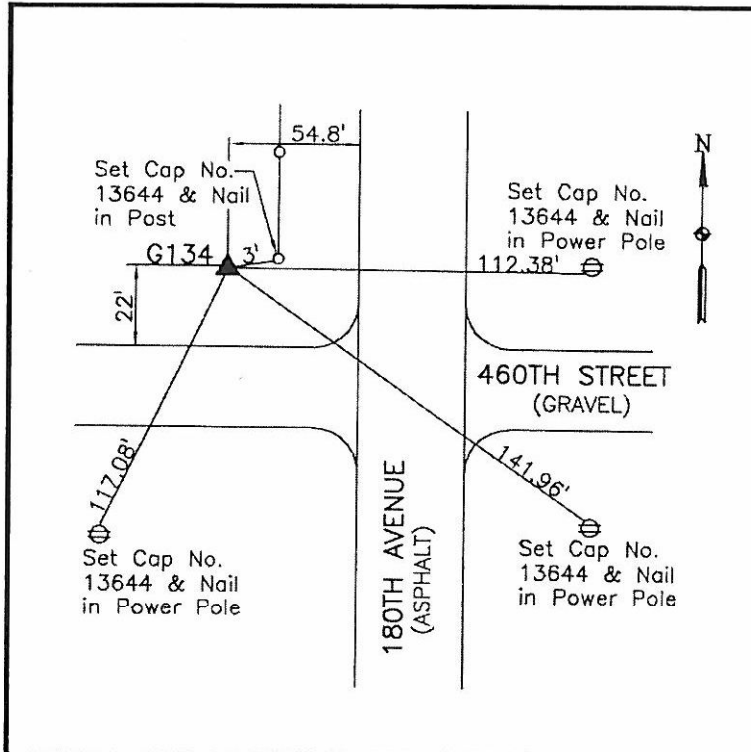
Latitude:	43°25'48.06027"N
Longitude:	93°37'02.71445"W
Scale Factor:	1.0000339406
Convergence:	-0°04'46"
Combined Factor:	0.99997707

Description:

Placed 5/8" X 6' - 0" Long Aluminum Rod with Cap Stamped G134 and NGS Style Access Cover 2" Deep.

Location:

NW Corner of 460th Street and 180th Avenue (County Road R60) - near NW Corner Section 6-T99N-R23W.



WHKS & CO.