

**WINNEBAGO COUNTY, IOWA
GPS CONTROL MONUMENT
IOWA NORTH ZONE (1401)
HORIZONTAL DATUM - NAD 83 (1996)
VERTICAL DATUM - NAVD 1988**

GPS POINT NUMBER **G135**

	US SURVEY FEET	METRIC
· Northing:	3984205.750	1214388.342
Easting:	4873783.980	1485532.328
Elevation:	1275.592	388.801
Ellipsoid Height:	1179.279	359.445
Geoid 99 Height:	-96.314	-29.357

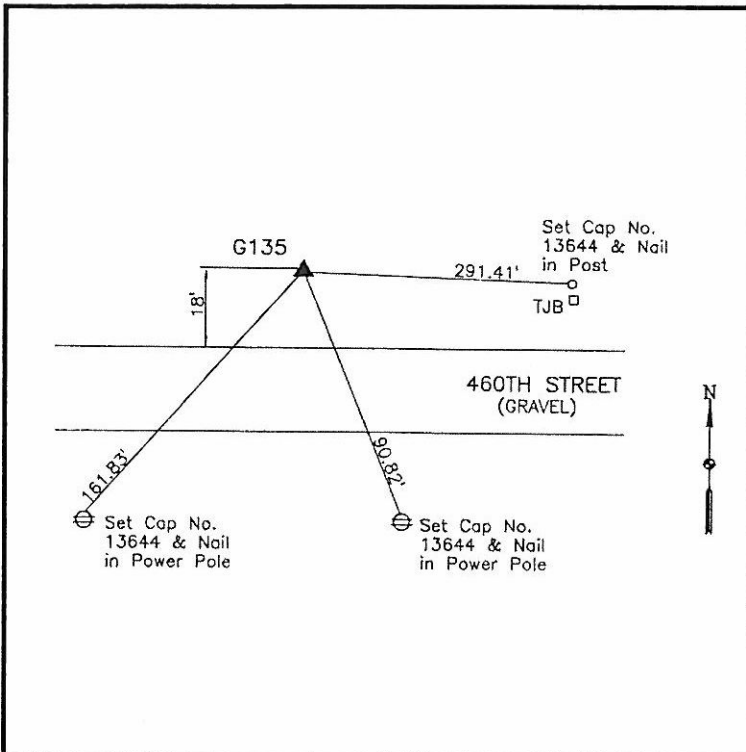
Latitude:	43°25'47.49666"N
Longitude:	93°40'43.22264"W
Scale Factor:	1.0000339042
Convergence:	-0°07'16"
Combined Factor:	0.99997764

Description:

Placed 5/8" X 6" - 0" Long Aluminum Rod with Cap Stamped G135 and NGS Style Access Cover 1" Deep.

Location:

On north side 460th Street - 400'± west of 150th Avenue (County Road R50) - near NW Corner Section 3-T99N-R24W.



WHKS & CO.