

**WINNEBAGO COUNTY, IOWA  
GPS CONTROL MONUMENT  
IOWA NORTH ZONE (1401)  
HORIZONTAL DATUM - NAD 83 (1996)  
VERTICAL DATUM - NAVD 1988**

GPS POINT NUMBER **G136**

	US SURVEY FEET	METRIC
Northing:	3984248.983	1214401.519
Easting:	4859054.030	1481042.631
Elevation:	1237.688	377.248
Ellipsoid Height:	1141.622	347.967
Geoid 99 Height:	-96.066	-29.281

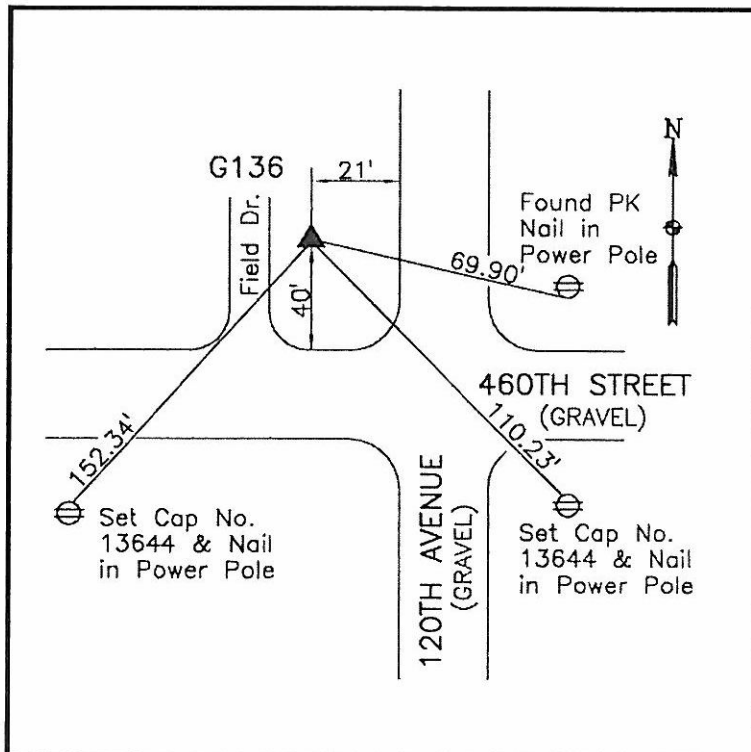
Latitude:	43°25'47.56846"N
Longitude:	93°44'02.83221"W
Scale Factor:	1.0000339088
Convergence:	-0°09'31"
Combined Factor:	0.99997944

**Description:**

Placed 5/8" X 6' - 0" Long Aluminum Rod with Cap Stamped G136 and NGS Style Access Cover 3" Deep.

**Location:**

NW Corner of 460th Street and 120th Avenue - near NW Corner Section 6-T99N-R24W.



**WHKS & CO.**