

**WINNEBAGO COUNTY, IOWA  
GPS CONTROL MONUMENT  
IOWA NORTH ZONE (1401)  
HORIZONTAL DATUM - NAD 83 (1996)  
VERTICAL DATUM - NAVD 1988**

GPS POINT NUMBER **G138**

	US SURVEY FEET	METRIC
Northing:	3984354.398	1214433.650
Easting:	4827736.387	1471496.994
Elevation:	1199.450	365.593
Ellipsoid Height:	1104.142	336.543
Geoid 99 Height:	-95.308	-29.050

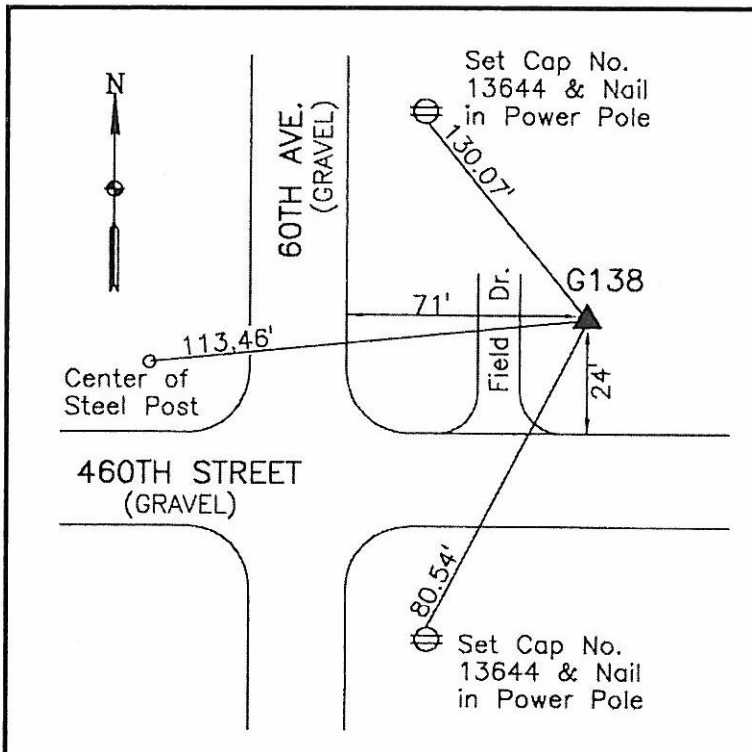
Latitude:	43°25'47.53734"N
Longitude:	93°51'07.22682"W
Scale Factor:	1.0000339068
Convergence:	-0°14'19"
Combined Factor:	0.99998123

**Description:**

Placed 5/8" X 6' - 0" Long Aluminum Rod with Cap Stamped G138 and NGS Style Access Cover 1" Deep.

**Location:**

NE Corner of 460th Street and 60th Avenue - 10'± east of field entrance - near NW Corner Section 6-T99N-R25W.



=====**WHKS & CO.**=====