

**WINNEBAGO COUNTY, IOWA
GPS CONTROL MONUMENT
IOWA NORTH ZONE (1401)
HORIZONTAL DATUM - NAD 83 (1996)
VERTICAL DATUM - NAVD 1988**

GPS POINT NUMBER **G139**

	US SURVEY FEET	METRIC
Northing:	3984342.011	1214429.874
Easting:	4811824.315	1466646.985
Elevation:	1196.259	364.620
Ellipsoid Height:	1101.441	335.720
Geoid 99 Height:	-94.818	-28.901

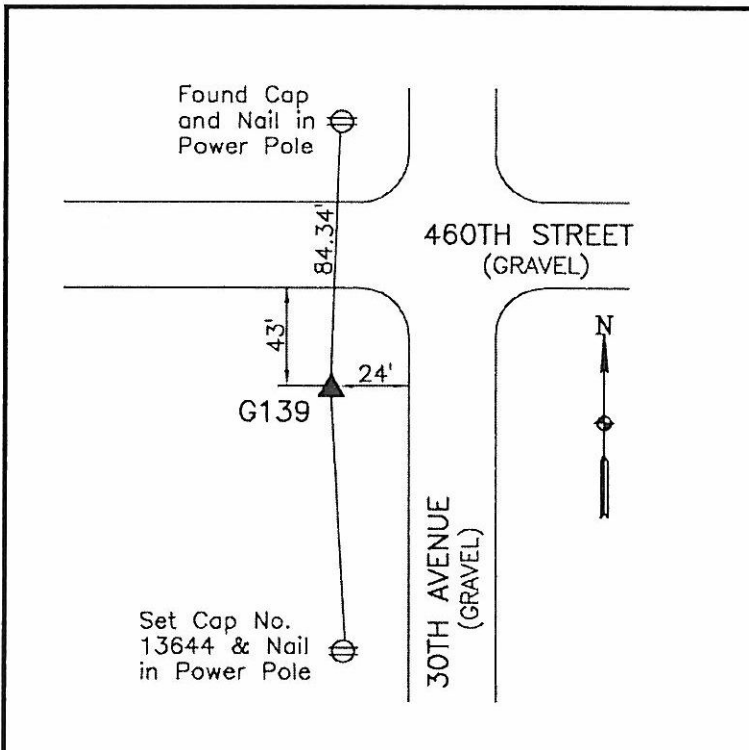
Latitude:	43°25'46.70499"N
Longitude:	93°54'42.85138"W
Scale Factor:	1.0000338530
Convergence:	-0°16'45"
Combined Factor:	0.99998130

Description:

Placed 5/8" X 6' - 0" Long Aluminum Rod with Cap Stamped G139 and NGS Style Access Cover 1 " Deep.

Location:

SW Corner of 460th Street and 30th Avenue - near NW Corner Section 3-T99N-R26W.



WHKS & CO.