

**WINNEBAGO COUNTY, IOWA
GPS CONTROL MONUMENT
IOWA NORTH ZONE (1401)
HORIZONTAL DATUM - NAD 83 (1996)
VERTICAL DATUM - NAVD 1988**

GPS POINT NUMBER **G140**

	US SURVEY FEET	METRIC
Northing:	3983918.097	1214300.664
Easting:	4796279.053	1461908.779
Elevation:	1178.236	359.127
Ellipsoid Height:	1083.898	330.373
Geoid 99 Height:	-94.339	-28.754

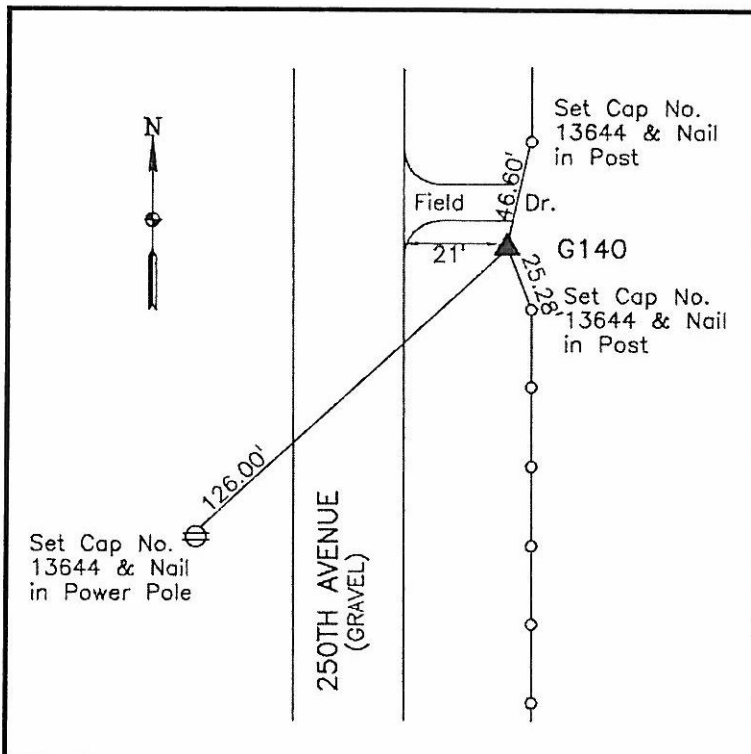
Latitude:	43°25'41.71727"N
Longitude:	93°58'13.47258"W
Scale Factor:	1.0000335308
Convergence:	-0°19'08"
Combined Factor:	0.99998182

Description:

Placed 5/8" X 6' - 0" Long Aluminum Rod with Cap Stamped G140 and NGS Style Access Cover 2 " Deep.

Location:

On east side 250th Avenue - 0.1± mile south of 460th Street - 15'± south of field entrance - near NW Corner Section 6-T99N-R26W.



WHKS & co.