

**WINNEBAGO COUNTY, IOWA  
GPS CONTROL MONUMENT  
IOWA NORTH ZONE (1401)  
HORIZONTAL DATUM - NAD 83 (1996)  
VERTICAL DATUM - NAVD 1988**

GPS POINT NUMBER **G141**

	US SURVEY FEET	METRIC
Northing:	4000214.984	1219267.966
Easting:	4797299.226	1462219.728
Elevation:	1140.907	347.749
Ellipsoid Height:	1046.734	319.045
Geoid 99 Height:	-94.173	-28.704

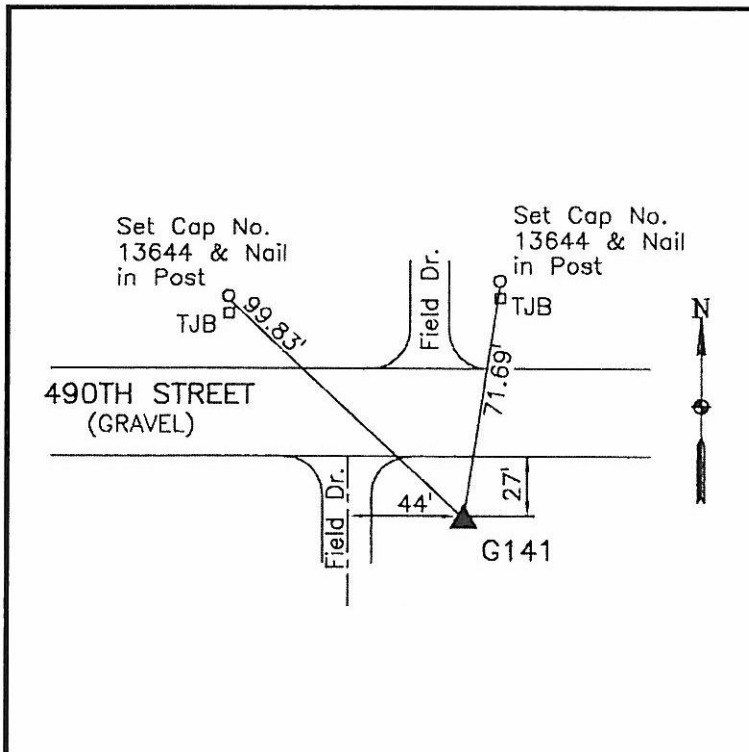
Latitude:	43°28'22.71886"N
Longitude:	93°58'00.86825"W
Scale Factor:	1.0000442286
Convergence:	-0°18'59"
Combined Factor:	0.99999429

**Description:**

Placed 5/8" X 6' - 0" Long Aluminum Rod with Cap Stamped G141 and NGS Style Access Cover 1 " Deep.

**Location:**

On south side 490th Street - 30'± east of field entrance - 0.75± mile west of 10th Avenue - 0.2± mile east of NW Corner Section 19-T100N-R26W.



**WHKS & CO.**