

**WINNEBAGO COUNTY, IOWA  
GPS CONTROL MONUMENT  
IOWA NORTH ZONE (1401)  
HORIZONTAL DATUM - NAD 83 (1996)  
VERTICAL DATUM - NAVD 1988**

GPS POINT NUMBER **G142**

	US SURVEY FEET	METRIC
Northing:	4000311.391	1219297.350
Easting:	4811788.343	1466636.020
Elevation:	1167.648	355.900
Ellipsoid Height:	1072.992	327.049
Geoid 99 Height:	-94.656	-28.851

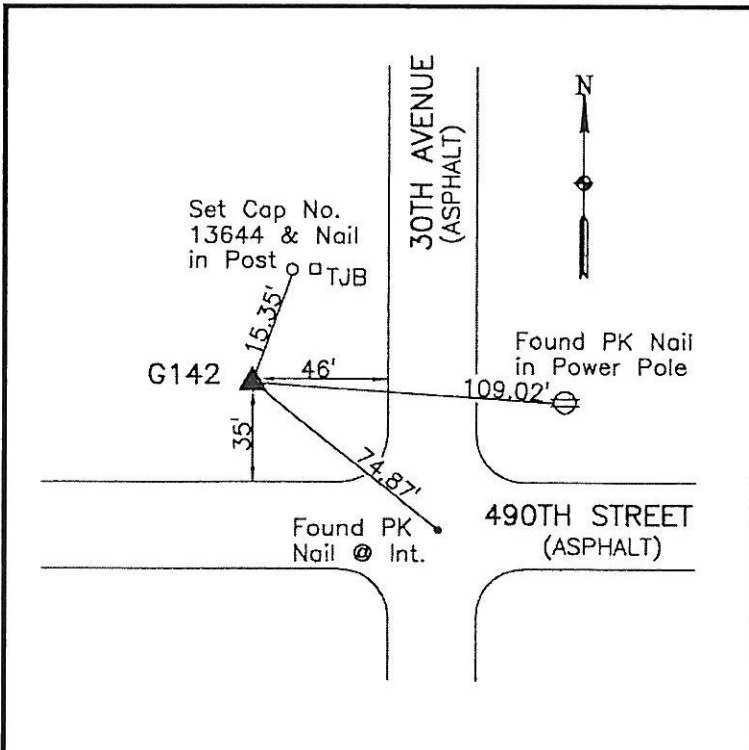
Latitude:	43°28'24.41506"N
Longitude:	93°54'44.39433"W
Scale Factor:	1.0000443446
Convergence:	-0°16'46"
Combined Factor:	0.99999315

**Description:**

Placed 5/8" X 6' - 0" Long Aluminum Rod with Cap Stamped G142 and NGS Style Access Cover 2 " Deep.

**Location:**

NW Corner of 490th Street (County Road A16) and 30th Avenue - near NW Corner of Section 22-T100N-R26W.



**WHKS & CO.**