

**WINNEBAGO COUNTY, IOWA  
GPS CONTROL MONUMENT  
IOWA NORTH ZONE (1401)  
HORIZONTAL DATUM - NAD 83 (1996)  
VERTICAL DATUM - NAVD 1988**

GPS POINT NUMBER **G143**

	US SURVEY FEET	METRIC
Northing:	4000226.526	1219271.484
Easting:	4827694.401	1471484.196
Elevation:	1193.068	363.648
Ellipsoid Height:	1097.889	334.637
Geoid 99 Height:	-95.180	-29.011

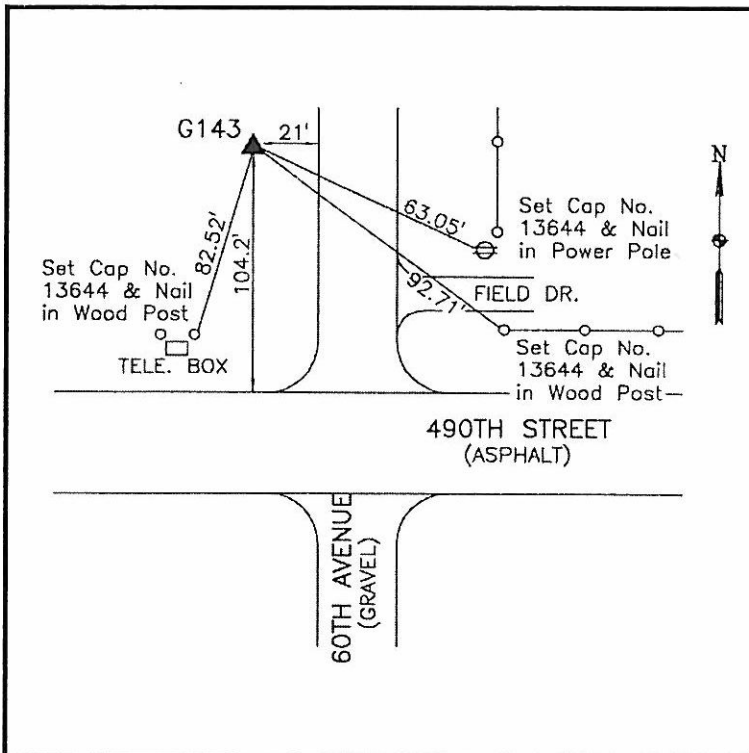
Latitude:	43°28'24.28746"N
Longitude:	93°51'08.69240"W
Scale Factor:	1.0000443358
Convergence:	-0°14'20"
Combined Factor:	0.99999195

Description:

Placed 5/8" X 6' - 0" Long Aluminum Rod with Cap Stamped G143 and NGS Style Access Cover 3 " Deep.

Location:

NW Corner of 490th Street (County Road A16) and 60th Avenue - near NW Corner Section 19-T100N-R25W.



**WHKS & CO.**