

**WINNEBAGO COUNTY, IOWA
GPS CONTROL MONUMENT
IOWA NORTH ZONE (1401)
HORIZONTAL DATUM - NAD 83 (1996)
VERTICAL DATUM - NAVD 1988**

GPS POINT NUMBER **G144**

	US SURVEY FEET	METRIC
Northing:	4000006.693	1219204.478
Easting:	4843409.382	1476274.132
Elevation:	1238.853	377.603
Ellipsoid Height:	1143.231	348.457
Geoid 99 Height:	-95.622	-29.146

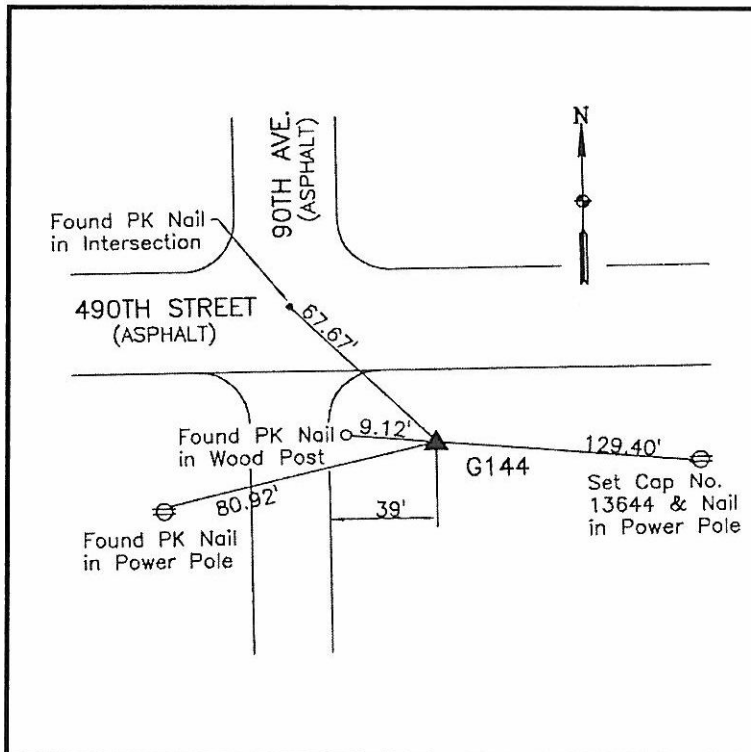
Latitude:	43°28'22.70905"N
Longitude:	93°47'35.57561"W
Scale Factor:	1.0000442279
Convergence:	-0°11'55"
Combined Factor:	0.99998968

Description:

Placed 5/8" X 6' - 0" Long Aluminum Rod with Cap Stamped G144 and NGS Style Access Cover 2 " Deep.

Location:

SE Corner of 490th Street (County Road A16) and 90th Avenue - near NW Corner Section 22-T100N-R25W.



WHKS & CO.