

**WINNEBAGO COUNTY, IOWA  
GPS CONTROL MONUMENT  
IOWA NORTH ZONE (1401)  
HORIZONTAL DATUM - NAD 83 (1996)  
VERTICAL DATUM - NAVD 1988**

GPS POINT NUMBER **G145**

	US SURVEY FEET	METRIC
Northing:	3999888.170	1219168.352
Easting:	4859126.196	1481064.627
Elevation:	1244.530	379.334
Ellipsoid Height:	1148.558	350.081
Geoid 99 Height:	-95.973	-29.252

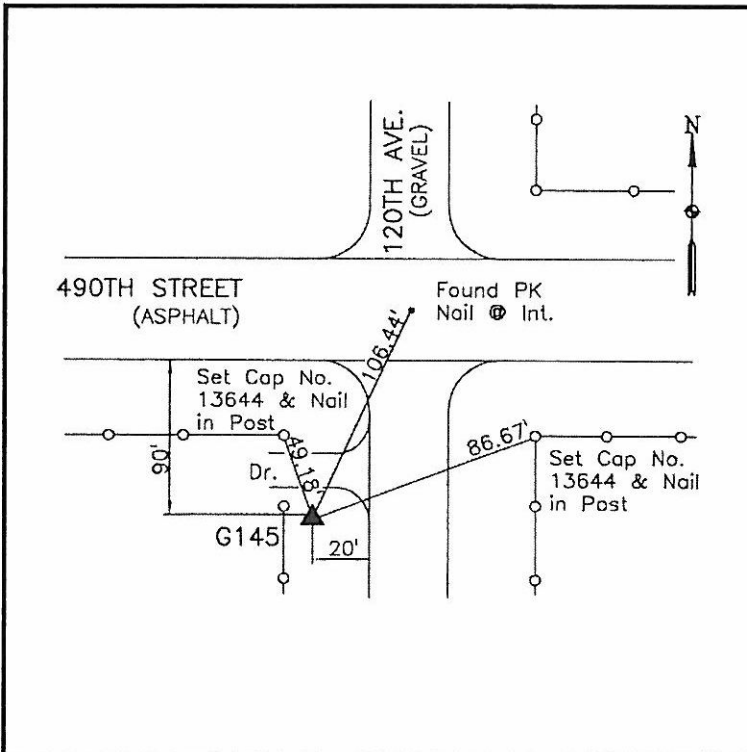
Latitude:	43°28'22.02254"N
Longitude:	93°44'02.44093"W
Scale Factor:	1.0000441810
Convergence:	-0°09'31"
Combined Factor:	0.99998938

**Description:**

Placed 5/8" X 6' - 0" Long Aluminum Rod with Cap Stamped G145 and NGS Style Access Cover 2 " Deep.

**Location:**

SW Corner of 490th Street (County Road A16) and 120th Avenue - near NW Corner Section 19-T100N-R24W.



**WHKS & CO.**