

**WINNEBAGO COUNTY, IOWA
GPS CONTROL MONUMENT
IOWA NORTH ZONE (1401)
HORIZONTAL DATUM - NAD 83 (1996)
VERTICAL DATUM - NAVD 1988**

GPS POINT NUMBER **G146**

	US SURVEY FEET	METRIC
Northing:	3999905.022	1219173.489
Easting:	4874422.963	1485727.091
Elevation:	1264.771	385.503
Ellipsoid Height:	1168.537	356.171
Geoid 99 Height:	-96.234	-29.332

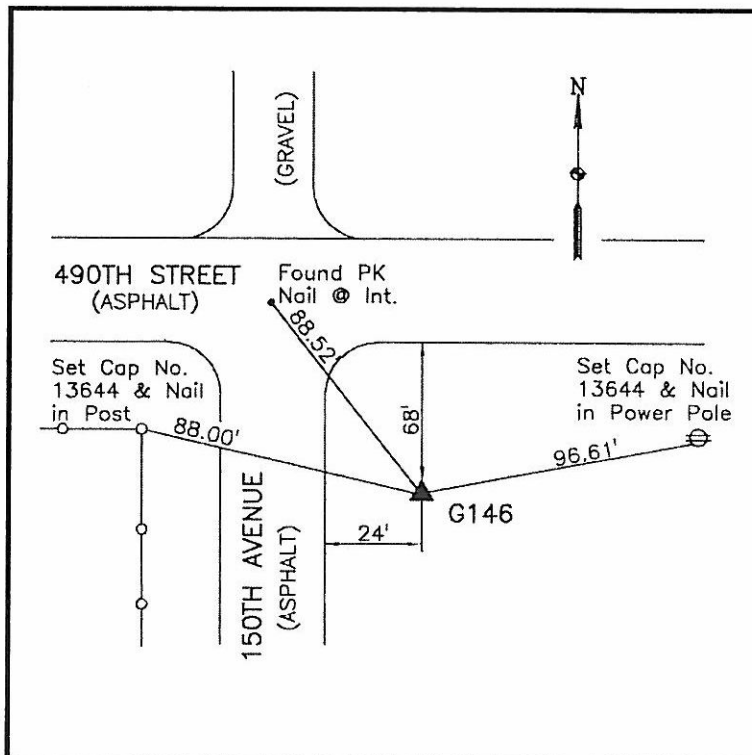
Latitude:	43°28'22.55566"N
Longitude:	93°40'35.00756"W
Scale Factor:	1.0000442174
Convergence:	-0°07'10"
Combined Factor:	0.99998846

Description:

Placed 5/8" X 6' - 0" Long Aluminum Rod with Cap Stamped G146 and NGS Style Access Cover 2" Deep.

Location:

SE Corner of 490th Street (County Road A16) and 150th Avenue (County Road R50) - near NW Corner Section 22-T100N-R24W.



WHKS & CO.