

**WINNEBAGO COUNTY, IOWA
GPS CONTROL MONUMENT
IOWA NORTH ZONE (1401)
HORIZONTAL DATUM - NAD 83 (1996)
VERTICAL DATUM - NAVD 1988**

GPS POINT NUMBER **G147**

	US SURVEY FEET	METRIC
Northing:	4000001.892	1219203.015
Easting:	4889434.896	1490302.737
Elevation:	1276.455	389.064
Ellipsoid Height:	1180.032	359.675
Geoid 99 Height:	-96.423	-29.390

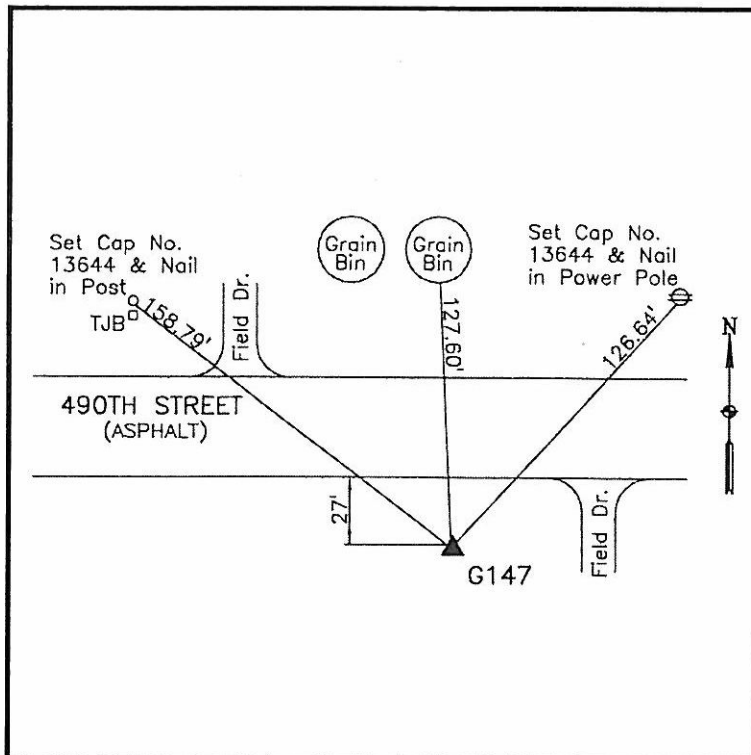
Latitude:	43°28'23.77210"N
Longitude:	93°37'11.43739"W
Scale Factor:	1.0000443006
Convergence:	-0°04'52"
Combined Factor:	0.99998800

Description:

Placed 5/8" X 6' - 0" Long Aluminum Rod with Cap Stamped G147 and NGS Style Access Cover 2 " Deep.

Location:

On south side 490th Street (County Road A16) - 600'± west of 180th Avenue (County Road R60) - 30'± west of field entrance - near NW Corner Section 19-T100N-R23W.



WHKS & CO.