

**WINNEBAGO COUNTY, IOWA  
GPS CONTROL MONUMENT  
IOWA NORTH ZONE (1401)  
HORIZONTAL DATUM - NAD 83 (1996)  
VERTICAL DATUM - NAVD 1988**

GPS POINT NUMBER      **G148**

	US SURVEY FEET	METRIC
Northing:	3999580.613	1219074.609
Easting:	4906180.306	1495406.748
Elevation:	1277.268	389.312
Ellipsoid Height:	1180.741	359.891
Geoid 99 Height:	-96.527	-29.422

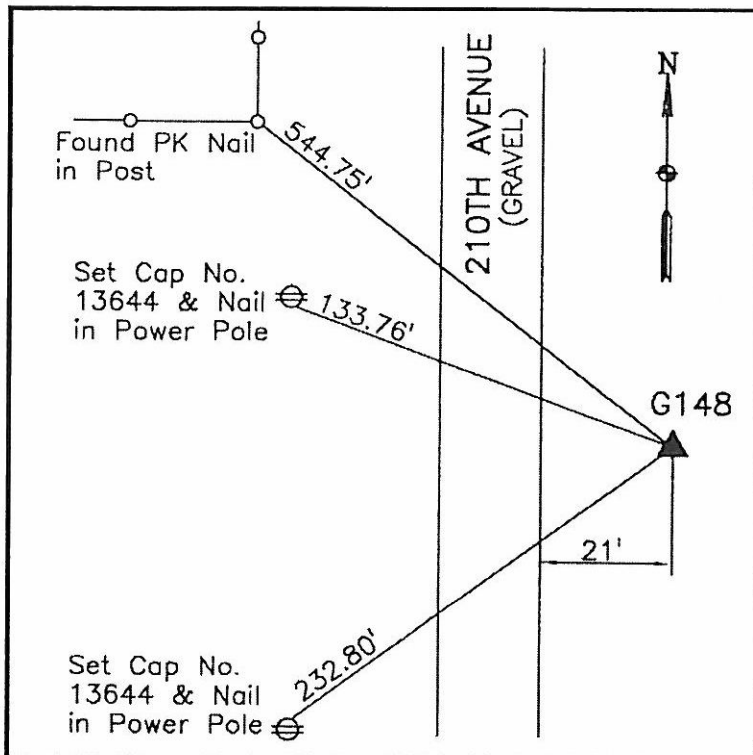
Latitude:	43°28'19.78432"N
Longitude:	93°33'24.35296"W
Scale Factor:	1.0000440281
Convergence:	-0°02'18"
Combined Factor:	0.99998769

**Description:**

Placed 5/8" X 6' - 0" Long Aluminum Rod with Cap Stamped G148 and NGS Style Access Cover 1 " Deep.

**Location:**

On east side of 210th Avenue - 400'± south of NW Corner Section 22-T100N-R23W.



**WHKS & CO.**